

*Where Tradition and
Innovation Meet*



**Qwest Fold-Down
Owner's Manual**

Cunningham Campers, Inc.

5201 Highway 62
Jeffersonville, IN 47130

1-812-284-0276 Option 3



Welcome to our Used Jayco Owners' Group

We Know Jayco Parts!

As a group member you receive **10% OFF** any order for parts, not already on sale. Just call us **with your VIN #** and we will find what you need and ship it directly from Jayco to your front door.

Like Jayco, we are family owned and operated. Our courteous professionals are here to help make your shopping experience as pleasant as humanly possible.

1-812-284-0276

Use Option 3 For Parts

<http://parts.cunninghamcampers.com/jaycoclub>

Cunningham's – Selling & Servicing Jayco RV's for OVER 38 Years!

This manual has been provided by Jayco, Inc. for the sole purpose of providing instructions concerning the operation and maintenance of this vehicle and its components. Nothing in this manual creates any warranty, either expressed or implied. The only warranty offered by Jayco, Inc. is as set forth in the limited warranty applicable to this vehicle.

The owner's failure to provide required service and/or maintenance could result in the loss of warranty. The owner should review Jayco's limited warranty and the limited warranties of all other manufacturers offering them that are applicable to this vehicle.

Instructions are included in the manual for operating various components which are optional on some vehicles. In addition, the owner should refer to individual manufacturer's operating instructions contained in the owner's packet.

CAUTION: Read all instructions prior to using camper.

YOUR NEW JAYCO IS YOUR PASSPORT TO A WHOLE WORLD OF NEW FRIENDS,
CAMPING FUN AND TRAVEL ADVENTURE WHEN YOU JOIN THE THOUSANDS OF
JAYCO FAMILIES WHO MAKE UP THE . . .

JAYCO JAFARI INTERNATIONAL TRAVEL CLUB

You will find us enjoying the friendship and fellowship of JAFARI CAMPING as we join our
local area FLIGHTS at hundreds of weekend camp-outs all over North America each month . . .

WE'RE THE FAMILIES OF JAYCO!

There are special STATE, REGIONAL and INTERNATIONAL RALLIES where you can join
with your fellow JAFARIANS and their flights to enjoy a special kind of togetherness . . . fun,
games, and entertainment provide memories to last a lifetime.

And . . . how about the exotic surroundings of NEW ORLEANS, the sounds and color of
NASHVILLE and the GRAND OLE OPRY, the roar and rush of the INDIANAPOLIS 500, the
quiet surroundings of the CANADIAN ROCKIES, the color of the SMOKY MOUNTAINS in
the Fall. These and many other adventures can be yours when you join the. . .

JAYCO JAFARI INTERNATIONAL TRAVEL CLUB

Fill in the blanks on the reverse side, cut along dotted line and mail along with a check to:

JAYCO JAFARI INT'L TRAVEL CLUB

ATTN: Membership Coordinator

P.O. Box 192

Osceola, IN 46561-0192

Yes, it's for everyone with a JAYCO RV; young couples just starting out, families spending quality time together, the young at heart expanding their life experiences. Whether you belong to another camping club, have always traveled alone, or are just starting, don't miss out on one of the most priceless benefits of being an RV family . . . meet new friends and spend a bit of your camping life with some of the finest people you will ever have the opportunity to share a campfire or treasure a moment of golden living with a . . . FIFTH-WHEEL TRAVEL TRAILER. . .SPORT UTILITY TRAILER . . . CONVENTIONAL TRAVEL TRAILER . . . TYPE C MOTORHOME . . . FOLDING CAMPING TRAILER . . . it doesn't matter. If you are a JAYCO RV FAMILY, then you are eligible to become a Jayco Jafari Member.

YOU WILL NEVER BE SORRY YOU MADE THE DECISION!

Your membership entitles you to:

- Special international decals for your unit.
- The Hitch newsletter with schedules of upcoming events and activities.
- A membership roster - containing the names and addresses of current members of the club will be sent bi-yearly.
- Discount Cards for several national theme parks including Six Flags and Busch Corp. Parks.
- A special price is available on Wheeler's Campground Guides.
- Discounts with Hertz Rental Car.
- Discounts with Coach Net, an emergency roadside service.
- Farm & City Insurance has RV insurance available at discounted rates to current Jayco Jafari International Club members.
- All of this, plus the joy of meeting new friends and enjoy Jafari adventures around the country.

Start with the first phase of your camping life...just complete the following application and forward it to the Jayco Jafari International Travel Club office. Your membership application may also be completed online, by visiting our website at www.jaycorvclub.com. If you have further questions, contact the club office direct at the website or by calling 800-262-5178. Local calls can be made to 574-258-0571.



WELCOME TO THE JAFARI FAMILY!



TO: Membership Coordinator for the Jayco Jafari International Travel Club

Please enroll us as members in the Jayco Travel Club. We are ready to roll to where the "friends we just haven't met yet" have the coffee on the fire and are waiting for us to arrive: We are ...

Name: _____ Spouse: _____

Address: _____ Phone: _____

City: _____ State: _____ Zip: _____

Email: _____

Ages of Children at Home: _____

Our JAYCO is a: _____ Our Dealer _____
(type & size)

Membership Dues:

One year	\$25.00	Amount enclosed. \$	_____
Two years:	\$45.00	Check #:	_____
Three years:	\$65.00		

(signature) (date)

Table of Contents

CHAPTER 1 – INTRODUCTION TO R.V. OWNERSHIP

Welcome	1
Safety Considerations	2
Reporting Safety Defects	2
Safety in Using LP Gas	2
Electrical System Safety	3
Safety When Emergency Stopping	3
Additional Safety Considerations	3
Insurance	4
Extended Use	4
Cold Weather Use	4
Condensation	4

CHAPTER 2 – OBTAINING SERVICE

Service Procedures	7
Basic Service Procedures	7
Dealer	7
Factory	8
Parts	8
Owner's Responsibility	8

CHAPTER 3 – USE OF YOUR FOLD-DOWN

Equipment	9
Tow Vehicle	9
Hitches	9
Hitch Height	10
Hook-Up	10
The Safety Chain	11
Towing	11
Traveling	12
Weights and Cargo Capacity	12
Loading Cargo	13
Tires	14
Tire Covers - Vinyl (Optional)	14
Wheel Lugs	15
Brakes	15
Brakes (Electrical)	15
Break-Away Switch	16
Brake Maintenance & Lubrication	16
LP Detector	17
Operation	17
Testing	17
Alarm	17
Procedures to Take During an Alarm	17
Alarm Mute	17
Malfunction Alarm	18

Low Power Operation	18
Fire Extinguisher	18
Soft Shades	18
Opening Your Camper	19
Closing Camper for Travel	21
Canopy Installation and Setup	23
Caring for your Canopy	23
Rain Damage	23
Setup – Fold-Down Self Storing Canopy	24
Screen Room	25
Installation Instructions (All Models)	25
Setup	25
Guide to Screen Room Care and Usage	25
Fiberglass Screening	25
First Time Installation	26

CHAPTER 4 – THE SYSTEMS

Water & Plumbing System	27
Fresh Water	27
Water Pressure Regulator	27
Sanitizing Potable Water Systems	27
Drainage - Fresh Water	28
Drainage - Waste Water	28
Winterizing Camper	28
Non-Power Supply Systems	28
Drain Traps	28
Electrical System	29
Changes, Modifications and Additions	29
120-Volt AC System	29
Air Conditioner (Optional)	30
12-Volt DC System	31
Battery Charger	31
Interior	31
Batteries (Optional)	32
Trailer Hitch Plug	32
Fuse and Bulb Chart	33
Fuses	33
Bulbs	33
LP Fuel System	33
LP Container	33
Servicing and Filling LP Containers	34
Installing LP Containers	35
Main Supply Hose	36
Regulator	36
Operation	37
Checking For Leaks	38
If You Smell Gas	38
LP Gas Consumption	39

Optional Double Bottles	39
Optional Automatic Changeover Regulator	39

CHAPTER 5 – APPLIANCES

Stove	40
Handling Stove Assembly	40
Operation of Stove	41

CHAPTER 6 – CARE OF BODY COMPONENTS

Exterior Aluminum (Cedar Embossed)	42
Exterior Roof	42
Frame	42
Drapes	42
Cushions	43
Interior care	43
Upholstery Fabrics	43
Countertops	43
Hardware and Sink or Shower Fixtures	44
Tents – Exterior	44
Canvas Material	44
Vinyl Material	44
Tents – Interior	45
Condensation in Tents	45
Tire Covers - Vinyl (Optional)	45
Paneling	45
Floor	45
Canopy	46

CHAPTER 7 – MAINTENANCE/STORAGE

Changing The Tire & Wheel	47
Storage	48
Maintenance Chart	49
Wheel Bearings	49
Lug Bolts	49
Coupler	50
Tongue Jack	50
Tires	50
Brakes	50
Lifter Posts	51
Master Tube	51
Winch	51
Cables	51
L.P. Gas System	51
Bed Slides	51
Frame	51
Bed Bow Support Poles	52
Appliances	52

Roof/Exterior	52
Components	52
Roof Latches	52
Sealants	52
Maintenance Checklist	53
 Towable Transferable Limited Warranty	 58
Terms & Representations	60
Limited Warranty Transfer Application	61

CHAPTER 1

INTRODUCTION TO R.V. OWNERSHIP

WELCOME

Thank you for purchasing your Jayco Recreational Vehicle and welcome to the world of recreational vehicle travel. Your purchase of a Jayco R.V. allows you to enter this unique world of camping and leisure in a grand style. **Your Jayco R.V. has been designed and engineered to offer you many comforts of home that will make your camping experience as enjoyable as possible.** Jayco recreational vehicles are designed, constructed and intended to be used as temporary living quarters for recreational, camping and travel uses, all as defined in the bylaws of the Recreation Vehicle Industry Association. Our recreational vehicles are not intended for the hauling of cargo.

This owner's manual was prepared to assist you in understanding the proper use and operation of various containment systems, servicing and maintenance of component parts, and explanation of your warranty protection. If you are a newcomer to R.V. travel, you will especially appreciate the suggestions and "shop talk" information to be found throughout this manual to help you obtain the most pleasure from the use of your vehicle.

The information in this manual reflects the most current available to us at the time of publication. If you find the components in your recreational vehicle vary significantly from what is described in this manual, please disregard that section and follow the instructions provided by that particular component manufacturer. You should carefully read and understand this owner's manual which is a supplement to various other instructions supplied by the manufacturers of separately warranted products.

Keep this owner's manual in your recreational vehicle for handy reference. Get to know your new vehicle and how it operates. You should carefully read and understand these instructions and information supplied by manufacturers of separately warranted products, since they contain important operating, safety, and maintenance instructions. If you have questions that are not adequately answered by this manual or other booklets, consult your dealer. If he cannot satisfactorily answer your questions, he will call our staff or refer you to us for help.

Every effort has been made to provide you with a safe, dependable product. Your vehicle complies with applicable requirements of Federal Motor Vehicle Safety Standards, State Regulations, Canadian Standards Associations (CSA) where applicable, and complies with requirements of ANSI Standard A119.2, the nationally recognized "Standard For Recreational Vehicles – Installation of Plumbing, Heating and Electrical Systems." The Recreational Vehicle Industry Association (RVIA) and Canadian Standards Association (CSA) periodically inspect our production line and assist us in maintaining strict compliance with installation and safety standards for those systems. **Your follow-up with periodic safety inspections and a program of preventive maintenance is important for the continuation of safe and trouble-free operation.**

Camping is a great way to relax and enjoy the outdoors with your friends and family. Please remember to tread lightly on our beautiful land and leave only your footprints so that others may enjoy nature as much as you did.

The Jayco Family
Jayco, Inc.

SAFETY CONSIDERATIONS

The terms NOTE, CAUTION and WARNING have specific meanings in this manual.

A **NOTE** provides additional information to make a step or procedure easier or clearer. Disregarding a NOTE could cause inconvenience, but would not be likely to cause damage or personal injury.

A **CAUTION** emphasizes areas where equipment damage could result. Disregarding a CAUTION could cause permanent mechanical damage. However, personal injury is unlikely.

A **WARNING** emphasizes areas where personal injury or even death could result from failure to follow instructions properly. Mechanical damage may also occur.

Reporting Safety Defects

If you believe that your vehicle has a defect which could cause a crash, injury or death, you should immediately inform the National Highway Traffic Safety Administration (NHTSA) in addition to notifying Jayco, Inc.

If NHTSA receives similar complaints, it may open an investigation, and if it finds that a safety defect exists in a group of vehicles, it may order a recall and remedy campaign. However, NHTSA cannot become involved in individual problems between you, your dealer or Jayco, Inc.

NHTSA
U.S. Department of Transportation
Washington, D.C. 20590
Phone: 1-800-424-9393
Washington, D.C. Area: 368-0123

Customer Relations Dept.
Jayco Incorporated
P.O. Box 460, Middlebury, IN 46540
Phone: 219-825-0670
Business Hours: 8:00-5:00 Mon.-Fri. E.S.T.

You can also obtain other information about motor vehicle safety from the Hotline.

Safety in Using LP Gas

You should check for leaks at the connections on the LP gas system soon after purchase and initial filling of LP tanks, and continued periodic checks of the system are recommended. Your vehicle was manufactured to provide you with full access to all gas line connections. Leaks can be found with a soapy water solution, which **does not contain ammonia or chlorine**, applied to the outside of the gas piping connections: the soap will bubble at the leak. **DO NOT USE FLAME OR LIGHTED MATCHES TO TEST FOR LEAKS.** Usually tightening of connections will close leaks. If not, ask an authorized dealer's service department to make the necessary tests and repairs.

ALTHOUGH THE MANUFACTURER AND DEALER HAVE PERFORMED TESTS FOR LEAKAGE, THIS CHECK IS RECOMMENDED DUE TO THE VIBRATION ENCOUNTERED DURING TRAVEL.

As LP gas is heavier than air, leaking gas tends to flow to low places which will sometimes pocket in low areas, such as the fold-down floor. LP gas can usually be detected by an identifiable odor similar to onions or garlic. Never light a match or allow any open flame in the presence of leaking gas.

It is very important to have the LP gas turned off during refueling of tow vehicles. Some states prohibit gas appliances to be operated during travel, especially in underground tunnels.

Never allow gas containers to be filled above the liquid capacity indicated on the container. If a container is overfilled, liquid gas may flow through the regulator causing it to freeze and/or introduce a dangerous excessive gas pressure into the lines. In addition, an overfilled container placed in hot sunlight may expel excess gas through the relief valve and be susceptible to ignition by any nearby open flame.

Electrical System Safety

Circuit breakers and fuses are installed to protect electrical circuits from overloading. Do not make unauthorized changes to circuitry or add on fixed appliances yourself. If you wish to make changes, consult your dealer and he will assist you in obtaining a safe installation.

An approved power supply cord has been supplied with the vehicle. Always use this cord for hook-up to the 120-volt source. Note that the cord has a three pin plug, which provides proper grounding through the third (round) pin. Grounding is your personal protection from electrical shock.

WARNING: Do not use an adapter, cheater, or extension cord that will break the continuity of the grounding circuit connected to the third pin. NEVER remove the grounding pin to connect a non-grounded, two-prong receptacle.

Safety When Emergency Stopping

Pull off the roadway as far as possible for emergency situations and turn on the vehicular hazard warning flashers. If necessary, display your road flags and/or reflective triangular highway warning devices.

NOTE: Always carry road flags and/or reflective triangular highway warning devices to be displayed when necessary.

Additional Safety Considerations

- Sanitize the fresh water supply system periodically (see sanitizing instructions).
- Prevent water connection fittings from coming in contact with the ground or drain hose to reduce chance of contamination.
- Enlist services of a qualified or certified RV technician to repair and maintain gas or electrical appliances.
- Always have a serviceable fire extinguisher placed in an easily accessible location.
- Carefully read the loading section under Chapter 3 related to your respective trailer.
- Ensure that tires are in good condition and properly inflated. Proper inflation should be monitored closely. Neglecting to do so could result in overheating of a tire, which could result in a blowout.
- Check and tighten wheel lugs after the first 10 miles, 25 miles, and 50 miles when new and after a wheel is removed. Check every three months or 3,000 miles.
- Check brakes in a safe area - not while traveling a busy highway.

- Always block trailer wheels solidly before unhitching.
- Before leaving a camp area with a trailer in tow, insure that the safety pin or locking lever is seated, breakaway wire is attached to tow vehicle, the jack is raised so that it cannot touch the ground, the dolly wheel removed, 110-volt electrical cord properly stored, safety chains are connected, and all interior lights are off.
- Observe the warning labels attached to your vehicle concerning LP gas, water, electricity and loading.
- Observe the maintenance chart in Chapter 7 related to your respective unit.

INSURANCE

As with your automobile, it is important that you protect yourself and others with insurance coverages for personal liability, theft, collision, property damage, etc. Your dealer will assist you in obtaining appropriate insurance for your protection or you may check with the company which provides your automobile insurance.

EXTENDED USE

This fold-down has been built for enjoyment in a recreational manner. It is not intended to be used as full-time living quarters.

CAUTION: Continuous living in your fold-down could cause accelerated wear and damage to components.

COLD WEATHER USE

Fold-down campers have no provisions for cold weather use.

- Winter use in freezing conditions is NOT recommended due to the inability to adequately insulate the tent fabric.
- Proper care should be taken with the fresh water and draining systems to avoid freezing problems. Consult your local dealer or RV supply house for additional material.
- Adequate gas and electrical supply is needed along with protection from possible freeze-ups on the gas regulator.
- During cold weather usage, ventilation or the addition of a dehumidifier may be required to reduce condensation. Reference "Condensation."

CONDENSATION

Condensation is a natural phenomenon. The amount of condensation will vary with the climate conditions, particularly the relative humidity. Condensation occurs because there is water vapor present in the air, which each of us adds by breathing, bathing and cooking. The water vapor collects where there is available air space, and when the temperature reaches the 'dew point' the water vapor in the air condenses and changes to liquid form. Most people have experienced a similar phenomenon when moisture forms on kitchen windows and bathroom mirrors during cool weather.

Proper ventilation and, if needed, the use of a dehumidifier will assist in controlling the condensation. Many RV and marine dealers carry small dehumidifiers especially sized for recreation use. Condensation causes dampness, mildew, staining and if allowed to continue at high levels, damage to the tent, paneling and wood structures.

CHAPTER 2

OBTAINING SERVICE

Warranty Registration and Customer Delivery Form

Jayco, Inc.
P.O. Box 460
903 South Main Street
Middlebury, Indiana 46540
(216) 825-0670

Dealer is to assure that this form is properly completed and returned to Jayco within ten (10) working days after delivery.

OWNER'S NAME			DEALER'S NAME		
ADDRESS			ADDRESS		
CITY	STATE	ZIP CODE	CITY	STATE	ZIP CODE
DELIVERY DATE / /		PHONE NUMBER (DAYTIME)	ODOMETER READING (MUST BE COMPLETED FOR MOTOR HOMES)		
JAYCO SERIAL NUMBER			CHASSIS VIN (VEHICLE I.D. NUMBER)		

**ALL ITEMS MUST BE MARKED OFF BY THE DEALER IN THE CUSTOMER'S PRESENCE INDICATING PERFORMANCE OR INSTRUCTION AS REQUIRED.
PLEASE MARK EACH ITEM OK OR NA (NOT APPLICABLE).**

- | | | |
|--|--|---|
| <p>1. ELECTRICAL SYSTEM</p> <ul style="list-style-type: none"> <input type="checkbox"/> 110-Volt System <input type="checkbox"/> 12-Volt System <input type="checkbox"/> All Interior Lights/Recepts <input type="checkbox"/> All Exterior Lights/Recepts <input type="checkbox"/> Battery - Full Charge and Maintenance <input type="checkbox"/> Converter Operation and Use <input type="checkbox"/> Monitor Panel and Maintenance <input type="checkbox"/> Operation and Maintenance of Slideout <input type="checkbox"/> Phone and Cable TV <input type="checkbox"/> Roof Air <input type="checkbox"/> Radio/Cassette <input type="checkbox"/> TV <input type="checkbox"/> Microwave <p>2. FOLDING CAMPER SET-UP</p> <ul style="list-style-type: none"> <input type="checkbox"/> Complete Set Up and Closing Demonstration, Proper Leveling <p>3. LP GAS SYSTEM</p> <ul style="list-style-type: none"> <input type="checkbox"/> Location and Maintenance of LP Lines and Connections <input type="checkbox"/> Maintenance and Operation of Regulator <input type="checkbox"/> Appliance, Refrigerator and Furnace Vents | <p>4. WATER/PLUMBING SYSTEMS</p> <ul style="list-style-type: none"> <input type="checkbox"/> Water lines <input type="checkbox"/> Faucet(s) <input type="checkbox"/> Winterizing <input type="checkbox"/> Water Intake/Drain lines <input type="checkbox"/> Outside shower <input type="checkbox"/> Shower <input type="checkbox"/> Holding tank <input type="checkbox"/> Toilet <p>5. APPLIANCES AND SAFETY EQUIPMENT</p> <ul style="list-style-type: none"> <input type="checkbox"/> LP Gas Manometer Test (Check for leaks - Repair if needed and retest) <input type="checkbox"/> Set Gas Pressure At _____ IN. Water Column <input type="checkbox"/> Furnace and Thermostat <input type="checkbox"/> Range and Oven <input type="checkbox"/> Water Heater and Bypass <input type="checkbox"/> Coffee Maker <input type="checkbox"/> Refrigerator <input type="checkbox"/> Break-away Switch <input type="checkbox"/> Tires - Correct size and inflate to sidewall pressure specs <input type="checkbox"/> Door Locks/Keys <input type="checkbox"/> Wheel Lugs (Tighten to specs for Ft. LB Torque) <input type="checkbox"/> - Review Maintenance Tighten at 10, 25, 50 miles. | <p>6. RUNNING GEAR</p> <ul style="list-style-type: none"> <input type="checkbox"/> Brake Adjustment and Maintenance <input type="checkbox"/> Bearing Lubrication and Maintenance <input type="checkbox"/> Brake Wire Connections <input type="checkbox"/> Hydraulic Brake Fluid and Maintenance <input type="checkbox"/> A-Frame/Coupler Operation <input type="checkbox"/> Operate and Lube Jacks <p>7. GENERAL APPEARANCE</p> <ul style="list-style-type: none"> <input type="checkbox"/> Interior/Exterior Trim <input type="checkbox"/> Exterior Finish <input type="checkbox"/> Bumper, Steps, A-Frame, Rub Out and Touch Up as Needed <input type="checkbox"/> Window and Roof Sealant <p>8. Motorized Products</p> <ul style="list-style-type: none"> <input type="checkbox"/> Check all Fluid Levels <input type="checkbox"/> Check all Door and Window Locks <input type="checkbox"/> Chassis Prep as Recommended by the Manufacturer |
|--|--|---|

DEALER INSTALLED OPTIONS (Dealer installed options are not covered under Jayco's limited warranties.)

OWNER/DEALER INSPECTION

- | | |
|--|---|
| <p>1. Exterior and interior finish.</p> <p>2. Operate all appliances and discuss maintenance.</p> <p>3. Review operation, maintenance and safety of LP system.</p> <p>4. Explain weight ratings, limitations and proper load distribution.</p> | <p>5. Operate all fresh water and plumbing components including faucets, shower toilet and drain locations.</p> <p>6. Review tow vehicle, hitch and sway control set-up - test drive.</p> <p>7. Complete review of owner manuals and highlight safety issues and maintenance.</p> |
|--|---|

I HAVE COMPLETED THE ABOVE INSPECTION ON THIS FAMILY CAMPING VEHICLE AND HAVE TAKEN A TEST DRIVE AT THE TIME OF PURCHASE. I NOTED:

I RECEIVED A COPY OF THE JAYCO LIMITED WARRANTY BEFORE I PURCHASED THIS VEHICLE AND I UNDERSTAND THAT IT IS DESIGNED TO BE USED ONLY FOR RECREATIONAL CAMPING AND TRAVEL.

I AGREE TO THE TERMS ON THE REVERSE SIDE, AND UNDERSTAND THAT I WILL BE REQUIRED TO ARBITRATE ALL MY CLAIMS CONCERNING MY RECREATIONAL VEHICLE RATHER THAN GOING TO COURT.

THE PURCHASER HAS INSPECTED OR BEEN GIVEN THE OPPORTUNITY TO INSPECT THE VEHICLE AND TAKE THE TEST DRIVE, SUPPLIED THE INFORMATION ABOUT HIS/HER NAME AND ADDRESS, BEEN GIVEN THE OPPORTUNITY TO MAKE NOTATIONS IN THE SPACE PROVIDED AND OBSERVED OR RECEIVED SATISFACTORY EXPLANATIONS ABOUT ALL ITEMS LISTED ABOVE.

DATE	PURCHASER'S SIGNATURE	DEALER'S SIGNATURE
_____	_____	_____

White Copy: Jayco

Canary Copy: Dealer

Pink Copy: Customer

3901156 Rev. R

INFORMAL DISPUTE RESOLUTION AGREEMENT

I am entitled to receive a copy of this Agreement, and I may review it with my attorney before signing. I and anyone making claims on my behalf, or through me, shall submit any and all claims I may have in connection with my recreational vehicle (RV) against any retail dealer, manufacturer, or supplier of component parts, to binding arbitration under the federal Arbitration Act, 9 U.S.C. § 1-14, to the extent permissible under federal law. I agree that if I have a claim relating to my RV, I will allow the dealer and Jayco to inspect it and make necessary repairs. If my claim is not then satisfied, I will notify Jayco and binding arbitration proceedings will be held after I have paid an initial fee of \$125 to the American Arbitration Association and I cannot pursue my claim in court or in any administrative proceeding. Arbitration will be administered by the American Arbitration Association (AAA), pursuant to its Commercial Arbitration Rules, unless and until Jayco designates a different administrator, in which event a notice will be mailed to your last known address. If my claim is less than \$10,000, Jayco will pay the initiation fee and arbitrator's fees in excess of \$125, and the arbitrator shall not award damages in excess of \$10,000. If my claim exceeds that amount or is not specified, I will pay one-half of the fees and costs in excess of \$125. I, the dealer, and Jayco will each pay their own costs and expenses in connection with the arbitration hearing. The claim will be heard by a single arbitrator, and will be held thirty (30) days after the claim is filed, unless all parties agree to a later date. The arbitrator shall be selected from a panel named by the AAA, pursuant to its rules. The arbitrator shall be permitted only to award actual damages for financial loss, and shall not award damages for personal injury (or mental anguish, or other intangible claims), or punitive damages. Statutes of limitation, which would apply to a court proceeding for my claim, will apply to commencement of arbitration proceedings. If I default on any obligation to a lender in connection with my RV, my lender may exercise all of its rights without regard to this agreement. If I file a claim in court without having first complied with this agreement, I will be required to pay all fees, costs, and expenses, including attorneys' fees, for dismissal or referral to arbitration. This agreement will apply to me, my heirs and assigns, and anyone who purchases or leases my RV from me or operates or occupies it with my permission or without objection by me. Nothing in this agreement enlarges my rights or gives me any rights or claims I would not otherwise have. **FOR INFORMATION ABOUT HOW TO FILE A CLAIM OR ABOUT THE ARBITRATION PROGRAM, CALL JAYCO AT 219-825-0670, OR THE AMERICAN ARBITRATION ASSOCIATION AT 800-778-7879.**

SERVICE PROCEDURES

Basic Service Procedures

We are interested in your satisfaction. Only by having your complete confidence and satisfaction with our product and its service can we assure our continued success as manufacturers of recreational vehicles. We have found that continuing a pleasant and effective relationship through our dealers is equally as important as maintaining the technical excellence of our product. Your authorized dealer will cordially assist you in providing service maintenance, selection of options and instructions concerning the operation of your vehicle.

Should you have a problem with service, please follow these instructions in sequence.

1. Contact your selling dealer's service department for an appointment. Describe to the best of your knowledge the nature of the problem.
2. Contact the owner or General Manager of the dealership should the initial attempt fail with the service department.
3. If further assistance is needed contact:

Customer Relations Dept.
Jayco Incorporated
P.O. Box 460
Middlebury, IN 46540
Phone: (219) 825-0670
Business Hours: Monday – Friday 8:00 – 5:00 EST

Give all the above information as requested along with the serial number of the unit in question and we will make every attempt to resolve your problem.

Please bear in mind that most problems arise from misunderstandings concerning warranty coverage and service. In most instances, you will be referred to the dealer level and problems will be resolved with the dealer's facilities and personnel.

Dealer

Your authorized Jayco dealer has inspected and serviced your new Jayco R.V. He is authorized to service and maintain your fold-down as needed. All warranty repairs are to be performed by the selling dealer unless Jayco gives prior approval.

Some R.V. dealers may be authorized service centers for certain manufacturers of products warranted separately. Check with your dealer before contacting others to reduce delays. If the your Jayco dealer is not an authorized service center for the product in question, he can assist you in obtaining authorized service.

Factory

A factory service department is operated at our Middlebury, Indiana, manufacturing facility. Should your Jayco RV be in need of repairs and your dealer recommends that the factory make the necessary repairs, it may be returned to our plant upon following these procedures:

- A. You or your dealer must make an appointment prior to returning it to the factory service department.
- B. All transportation costs are the responsibility of the owner. You may need to arrange for alternative accommodations for some types of repairs. Please be prepared accordingly.

Parts

Parts are available at most Jayco dealerships or your dealer can order parts for you as needed. Should you be unable to find a dealer in your local area, contact our Customer Service Department at 219-825-0670 and we will assist you in providing parts through an authorized dealer or from Jay-Parr Supply, our parts department located in Middlebury, Indiana.

Owner's Responsibility

As a new owner of a Jayco recreational vehicle, you are responsible for regular and proper maintenance. This will help you prevent conditions arising from neglect that are not covered by your Jayco Limited Warranty.

Maintenance service should be performed in accordance with this owner's manual and any other applicable manuals.

As the owner, it is your responsibility and obligation to return the RV to an authorized dealer for repairs and service. Reference your Limited Warranty for additional information. Because the authorized dealer where you purchased your RV is responsible for its servicing before delivery and has an interest in your continued satisfaction, we recommend that inspection, warranty and maintenance services be performed by the dealership.

If you are traveling and are unable to locate an authorized Jayco dealer, or an authorized dealer for the component needing service, please call our customer service office at 219-825-0670 or contact your selling dealer for assistance.

NOTE: Service at a non-authorized Jayco dealer should have prior authorization. You will be asked to return any mechanical parts replaced before reimbursement consideration is made. Unauthorized or improper repairs may void the warranty on that component.

Please keep your owner's manual, your copy of your warranty registration form and any other related papers in your RV.

CHAPTER 3

USE OF YOUR FOLD-DOWN

In this chapter you will find helpful information to assist you in preparing, traveling and using your fold-down camper.

EQUIPMENT

Tow Vehicle

Begin your camping experiences by using a tow vehicle which will adequately transport your fold-down camper to and from your destinations. You must use the Gross Vehicle Weight Rating (GVWR) factor as a measuring tool to cross match the capability of your selected tow vehicle. Ford, Chrysler and Chevrolet provide trailer towing guides for their products, as do most auto and truck manufacturers. Ask your local automotive dealer for a copy or contact the factory's direct lines for information. Many tow vehicles, including mini-vans, have special towing package options available for fold-down campers. Tow vehicles with long wheel bases perform better than short wheel bases such as Broncos or Blazers. The condition of the suspension system in your tow vehicle is also an important factor. Make sure your tow vehicle is in good mechanical condition and maintenance is up to date.

Hitches

After choosing your tow vehicle, it is very important to install a hitch system with weight distributing bars to accommodate your coach. This weight selection and installation should be performed by a professional hitch service which may or may not be your selling dealer.

Class II or III hitches are suggested. With the Class III, 350# equalizing bars can be used if installed correctly with the surge brakes. The very equipment which sometimes gives autos, trucks and sport utility vehicles a softer ride can accentuate swaying when pulling a trailer. Conversely, too stiff a suspension can increase vibration, bounce and accelerate wear of your tow vehicle and trailer. It is important that your trailer be level when hitched to your tow vehicle. Educate yourself to protect you, your family and other motorists. An anti-sway device may be needed with some tow vehicle/trailer combinations. Short wheel bases on tow vehicles can contribute to sway.

CAUTIONS:

- Using an over-sized or under-sized hitch can cause damage to the frame of your fold-down camper.
- Jayco, Inc. cannot be responsible for the suspension system of the tow vehicle. The final ball height after the coach is completely hooked up is a factor to be considered when towing a trailer. To avoid overloading your RV axles and minimize possible handling difficulties, your RV should tow level when hooked to your tow vehicle.
- Do not overload your tow vehicle

Hitch Height

The correct hitch ball height is listed on the chart below for your fold-down. It is measured with the unit in a level position, measuring from the top of the ball to ground level.

Jayco Incorporated cannot be responsible for the suspension system of any tow vehicle. There are a variety of suspension systems available on tow vehicles today which will effect the ball height, stability and levelness of the RV when hooked up to the vehicle. Make certain your dealer is aware of the type of tow vehicle that will be used so a compatible hook-up can be achieved.

Specifications

MODEL	HEIGHT
Qwest 10	17"
Qwest 8	17"

The ball size on all fold-down campers is 2 inches.

Hook-Up

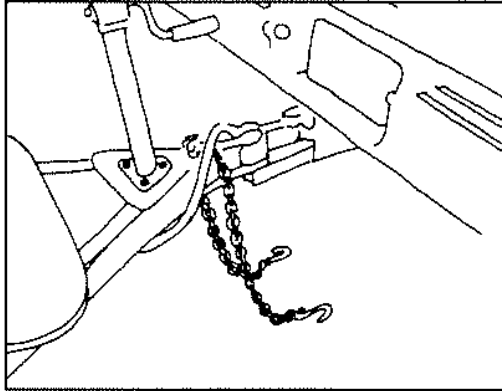
Hooking up a camper is not difficult and will become easier with practice. The following procedure will help you until you become more experienced.

1. Turn crank on jack to raise tongue of trailer above hitch ball on hitch.
2. Open coupler latch.
3. Back tow vehicle into proper position.
4. Turn crank on jack to lower coupler onto ball hitch.
5. Close coupler latch after completely seated.
6. Install weight distributing bars (equalizers) as per recommendations from hitch supplier, when required.
7. Remove dolly wheel and retract tongue jack to its maximum height.
8. Attach cable for break-away to tow vehicle.
9. Attach safety chains as shown in Figure 1.
10. Plug in your 12-volt electrical connector from tow-vehicle to trailer.
11. The following items should be inspected prior to your journey:
 - All lights should be in working order
 - Stabilizer jacks should be in the retracted position
 - Entrance steps should be in the retracted position
 - Refrigerator door should be closed and locked
 - All loose items should be secured
 - Brakes should be tested for operation prior to entering roadway
 - Tire pressure should be checked and maintained per the tire pressure stamped on the tire sidewall

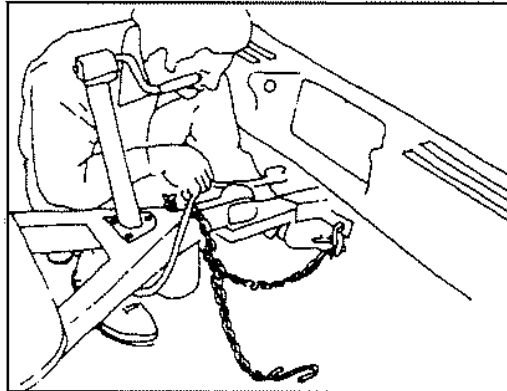
The Safety Chain

There are different safety chain requirements determined by the various state laws. Your vehicle is equipped with chains to meet SAE standard requirements for maximum gross trailer weight. Always have the safety chains attached when towing. Install them as shown below so they do not restrict sharp turns, but tight enough so they do not drag on the ground.

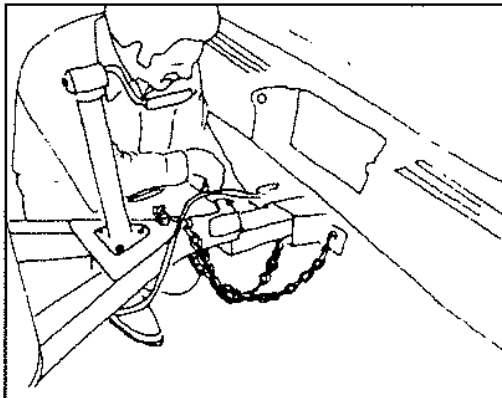
Figure 1



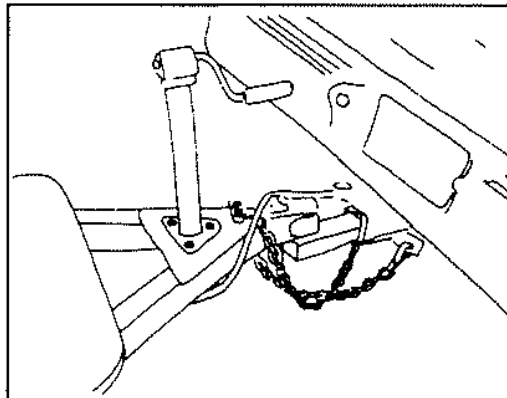
1. Inspect chains to determine if they are properly attached to trailer frame.



2. Criss-cross left chain and attach to right mounting slot in trailer hitch.



3. Repeat step 2 with right chain. Slack for each length should be the same but not more than necessary to permit the vehicle to turn at their minimum radius.



4. Properly mounted safety chain. Note that the jack is fully raised and dolly wheel removed.

Towing

While towing your Jayco trailer you need to be aware of the extra weight behind your vehicle. The following lists some pointers to remember while traveling.

- With the trailer attached you will have slower acceleration and need more distance to stop.
- Ensure you have enough area at corners when turning, as wider turns are necessary. Utilize your turn signals for your own safety.
- In passing or changing lanes, remember that you need a longer distance to pass.
- Use your rearview mirrors frequently to observe your trailer and traffic conditions.
- When being passed by a large truck or bus, be prepared for displaced air as it may cause you to sway slightly.

- Upon climbing steep, long grades and again descending, use lower gears even before it seems necessary. Use your brakes smoothly and evenly.
- Drive slowly during wet and icy conditions to ensure better control of your vehicle.

If you are new to trailering, please take time to practice your towing, parking and backing skills prior to your travels. Your dealer can answer many of your questions, but nothing replaces practice. We recommend you find a large and quiet parking lot to practice your skills. Check all exterior lights before each trip. Obey traffic laws, allow extra time for stopping and decrease speed when visibility is limited or roads are wet. Have a safe and wonderful trip!

TRAVELING

Weights and Cargo Capacity

For safety reasons, it is very important to provide RV owners with the most accurate weight information available. The "Federal Certification" label, located on the left front corner of the sidewall, supplies a portion of this information.

There are four important weight terms an owner needs to understand when operating a towable recreational vehicle:

Gross Vehicle Weight Rating (GVWR) – The GVWR equals the most or maximum weight your recreational vehicle should weigh with all liquids (water, LP Gas, if applicable), food, clothing, camping supplies, and **ALL OPTIONS** loaded in the coach when attached to tow vehicle. The sum of the empty trailer weight plus cargo cannot exceed the GVWR.

Unloaded Vehicle Weight (UVW) – The UVW, also called the "Empty Shipping Weight" is the weight of the coach as it was manufactured at the factory without liquids, factory options or dealer accessories included.

Net Carrying Capacity (NCC) – The NCC equals the maximum weight of all liquids, options, dealer installed options and owner's cargo consisting of food, clothes, camping equipment, etc.

Gross Axle Weight Rating (GAWR) – The maximum weight that may be placed on an axle assembly. The sum of this rating is the weakest link of the tires, wheels, springs, axles or brakes.

The weight provided in the Jayco literature for your camper is based on standard equipment on that particular model and are "dry" (i.e. no liquids or cargo). Remember that any options or personal cargo added must be subtracted from the available cargo capacity. **Never exceed the gross vehicle weight rating of your camper.**

TRAILER WEIGHT INFORMATION	
Model	_____
GVWR	_____
UVW	_____
NCC	_____
<p>GVWR (Gross Vehicle Weight Rating) means the maximum permissible weight of this trailer. The GVWR is equal to or greater than the sum of the Unloaded Vehicle Weight plus the Net Carrying Capacity.</p>	
<p>UVW (Unloaded Vehicle Weight) means the weight of this trailer as built at the factory. If applicable, it includes full generator fuel, engine oil, and coolants. The UVW does not include cargo, fresh water, LP gas, or dealer installed accessories.</p>	
<p>NCC (Net Carrying Capacity) means the maximum weight of all personal belongings, food, fresh water, LP gas, tools, dealer installed accessories, etc., that can be carried by this trailer. (NCC is equal to or less than GVWR minus UVW).</p>	
<p>This trailer is capable of carrying up to _____ gallons of fresh water (including water heater) for a total of _____ pounds. Reference: Weight of fresh water is 8.33 lbs/gal; Weight of LP gas is 4.5 lbs/gal (average).</p>	
<p>CONSULT OWNER'S MANUAL FOR SPECIFIC WEIGHING INSTRUCTIONS AND TOWING GUIDELINES.</p>	

LOADING CARGO

Packing camping gear in your fold-down requires serious consideration. All cargo should be distributed evenly with the heaviest items stored in the lower cabinets. Heavy items must be secured to prevent weight shifts while traveling. Additional weight behind the axle should be kept to a minimum.

Observe capacity rating to avoid problems.

WARNING: Rear bumper on fold-down camper is not designed to carry additional weight. Channel bumpers can twist, flex, develop metal fatigue and weld stress. Damage to your property can occur and also endanger vehicles following your camper during travel and could possibly cause an accident.

WARNING: Never add items such as generators, motorcycle racks, heavy tool boxes, etc. to the back of your RV. Weight behind the axle lightens the hitch weight and will magnify any sway that occurs when passing trucks or driving in gusty winds. Excess weight may cause a severe sway that you may not be able to control.

CAUTION: Damage from add-on equipment or improper loading is not covered by your Jayco Limited Warranty.

Your Jayco fold-down roof has a weight limit of 350 pounds in the travel mode. To assist in calculating the weight of options available, we provide the following guide.

NOTE: Weights of canopies, bike or boat racks, are based on Jayco provided brands, and are empty weights. If you purchase other brands, obtain their weights from their representatives.

Canopy	26-31 pounds
Bike Rack	41 pounds
Boat Rack	26 pounds
Additional bike kits	18 pounds
13,500 air conditioner	Average 100 pounds

WARNING: Never attempt to raise the camper roof with removable cargo still in place. The maximum weight that can be lifted is 250 pounds. The 250 pounds includes all attached options such as: bike rack, canopy, air conditioning and boat rack.

Never mount a storage pod directly to the roof. It is necessary to provide a rack system which secures to the outer edges of the roof to support and evenly distribute the weight of the storage pod. Consult your dealer for proper installation.

Never walk on the roof. A fold-down roof is not designed to accommodate the weight, scratches, dents and punctures that can occur from walking on the roof.

Weight distribution is very important. Improper distribution, as well as overloading the camper can cause poor handling and sway during towing. Heavier items should always be packed over or in front of the axles. Personal cargo should be evenly distributed throughout the camper. When installing a bike rack it should be centered over or in front of the camper axles.

CAUTION: NEVER attempt to raise the trailer by placing a jack under the axle. Lifting the trailer by this method may alter the camber in the axle causing permanent damage.

Option Weight Listing	(Approximate Added Weight Listed in Pounds)	
	QWEST 8	QWEST 10
Convenience Group	39	39
Spare Tire	24	24
Electric Brakes	30	30
Canopy	26	28
Deluxe Screen Room	16	17
Screen Room	16	17
Furnace	19	19
Refrigerator	41	41
Air Conditioner	110 maximum	110 maximum
Self Storing Step	9	9
U-Shaped Dinette	10	N/A

NOTE: Other small option items are 5 lbs. Or less.

NOTE: LP Gas weighs 4.25 lbs. per gallon.
Water weighs 8.32 lbs. per gallon.

NOTE: Certain options are not available on all models or may be standard equipment on others.

TIRES

The tires of all Jayco units are supplied by companies for RV use, and tested under D.O.T. standards at allowed speed limits on highways. They are constructed of nylon cord designed to offer strength and extra mileage in various types of weather. The air pressure should be kept at its recommended pressure, which is stamped on the tire sidewall. Always check the tires when they are cold. As tires are in motion, temperature will rise and air pressure will increase. DO NOT release air pressure as tires become hot, as the tires will then be under-inflated as they cool.

CAUTION: It is recommended that the tire pressure be checked at the beginning of each journey to obtain the maximum life of the tires.

Tire Chart MODEL	TIRE SIZE	LOAD RANGE	MAXIMUM LOAD
Qwest	5.30 x 12	C	1045

INFLATION: Always follow the inflation guidelines printed on the sidewall of the tire for maximum load capacity.

Any replacement of tire MUST be rated equal to original tire in maximum load capacity.

TIRE COVERS - VINYL (Optional)

TIP: To minimize the possibility of tire "bleeding" through onto a tire cover, use a separator (garbage bag, paper, cloth, etc.) between tire and cover.

WHEEL LUGS

When the wheels are installed on your Jayco the lug bolts must be tightened at 85-95 foot pounds of torque for 12" tires.

WARNING: Because the axles on an RV do not drive or steer as automobile axles do, the motion of being trailered adds stress that can loosen lug nuts, especially during the initial break-in period. Wheel lugs can work loose. Check and tighten wheel lugs every 10, 25 and 50 miles when the unit is new or a tire is changed, then every 3,000 miles.

After your first trip, check the wheel lugs periodically for safety. The wheel lugs should then be checked after winter storage, before starting a trip, or following extensive braking. Over-tightening can distort wheel. Please observe the above recommendations for your safety and that of others. Size of lug bolts are 1/2" with 13/16" head.

BRAKES (Electrical)

Electric brakes on your recreational vehicle are designed to work in conjunction with the hydraulic brakes on your tow vehicle. This means that in order to have the best brake performance on both systems, the trailer and tow vehicle must perform and operate together. Any attempt to use either brake system alone will cause accelerated wear and damage.

Two types of controllers are available. The first is "hydraulic" which operates through a steel line attached to the master cylinder of the tow vehicle's brake system. The second type is an "electronic" controller, which operates completely on electrical current. See your operating instructions provided with the controller for adjustments and operation procedures.

Your battery in the tow vehicle is your primary power source to operate the brakes in your towable trailer. Keep your battery and charging system in working operation to ensure available energy when required.

From the battery, power is sent to the controller, the "switch" to provide the correct amount of current to brake assemblies on coach. Your controller is to be installed below the dash board of your tow vehicle.

Use the foot pedal control for general operation on combined use of both brake systems. Manual control is to be used only in special situations such as indicated in the manual supplied with control.

In open position, the control breaks the electrical current preventing brake engagement. When in closed position, electrical current will flow to brake assemblies.

Wiring to operate your brakes must be sized in both vehicles, suggesting a minimum of 14 gauge. Your camper has 14 gauge wire from front end to brakes.

Brake assemblies are wired in parallel, never in a series. Being parallel, there will be equal voltage and amperage at each brake assembly for equal braking capability and/or performance.

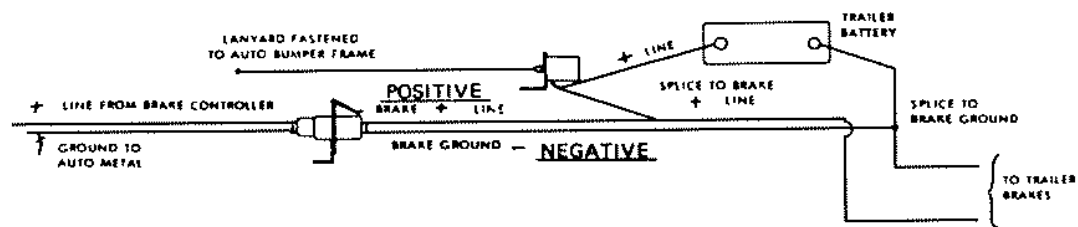
When your coach is new it is impossible to adjust your brake shoe precisely. It takes approximately 1,000 miles and/or 50 medium to heavy stops to "burnish" fit or seat the

shoes to drum. After this initial break-in, you can now adjust your shoes accurately for best performance.

Break-Away Switch

The break-away switch is one of the most important parts of your trailer electric brake system. The very instant a break-away occurs, the pull pin which is linked to the tow car, is pulled from the switch. The two contacts automatically close to complete the electrical circuit and apply the trailer brakes. This system will apply the brakes of the trailer should it break away from the tow vehicle. A 12-volt battery is required to power the breakaway switch.

WARNING: NEVER use the break-away switch and trailer brake system as a parking brake. Usage in this way would place undo strain on the battery and convertor, potentially causing damage to the wiring, connectors, and break-away switch.



Break-Away Switch Schematics

CAUTION: Break-away switch should be fully released during vehicle operation. Check before towing. Do not use break-away switch as a parking brake as it draws current and can overheat, damaging equipment.

BRAKE MAINTENANCE & LUBRICATION

- Lubricate ball with standard automotive grease.
- Check and adjust brakes at least once per year. Consult your individual brake owner's manual for additional information or consult your dealer regarding this item.

LP DETECTOR

All recreational vehicles containing an LP fuel system with propane consuming appliances require a propane leak detection device for safety protection. Converter or auxiliary battery is required to supply 12 volt DC energy to operate leak detector.

Operation

Power ON Warm Up: When power is first applied the yellow LED will flash for three minutes while the detector is warming up. At the end of that time the LED will turn Green indicating full operation. If the detector has detected unsafe levels of gas it will immediately go into alarm.

CAUTION: This detector cannot alarm during the 3 minute warm up cycle.

Testing

WARNING: Test the operation of this detector after the vehicle has been in storage, before each trip and at least once per week during use.
--

Simply press the TEST switch any time during the warm up cycle or while in normal operation. The LED should flash RED and the alarm should sound. Release the switch. **This is the only way you should test your detector.** This test feature checks the full operation of the detector. If this detector does not test properly, return the detector immediately for repair or replacement.

Alarm

The red LED will flash and the alarm will sound when dangerous levels of gas are detected. The detector will continue to alarm until the gas clears or the MUTE switch is pressed. (See Procedures To Take During An Alarm).

PROCEDURES TO TAKE DURING AN ALARM

1. Turn off all gas appliances (stove, heaters, furnace). Extinguish all flames and smoking material. Evacuate – leave doors and windows open.
2. Turn off the propane/CNG tank valve.
3. Determine and repair the source of the leak. Seek professional help if necessary.

CAUTION: Do not re-enter until the problem is corrected.

ALARM MUTE

This feature is activated by pressing the TEST/MUTE button when the detector is in alarm.

1. The red LED will continue to flash and the alarm will beep every 30 seconds until the gas level has dropped to a safe level, then . . .
2. The LED will flash green until the end of the mute cycle and/or . . .
3. Return to red and beep 4 times if high gas levels return before the end of the mute cycle, then . . .
4. Return to normal (solid green) or resound the alarm in approximately 2 minutes if dangerous levels of gas remain in the area.

MALFUNCTION ALARM

The microprocessor will activate the malfunction alarm when it detects a fault in the detectors operation. The LED will alternately flash red and green, while the sounder beeps twice every 15 seconds. The mute switch will not function. Remove the detector immediately and return it for repair or replacement.

Low Power Operation

This detector will operate normally down to 7 vdc. Do not operate this detector below 7 vdc.

WARNING: Limitations of propane/methane gas detectors:

- This detector will not work without power. Examples causing no power are: an open circuit breaker, a faulty power line connection, a blown or missing fuse.
- This detector will only indicate the presence of propane or methane gas at the sensor. Explosive gas may be present in other areas.
- This detector may not be heard. The alarm loudness is designed to meet or exceed regulatory standards, however, the alarm may not be heard if detectors are located in remote locations or behind closed doors. The alarm may not be heard by persons who are hard of hearing.
- This detector is not a smoke or fire detector. It is not suitable as a smoke or fire detector.
- This detector is not suitable for installation in hazardous areas as defined in the national electrical code.

Additional information is supplied in a manual published by the manufacturer of this equipment.

FIRE EXTINGUISHER

A fire extinguisher is installed in each vehicle and is located near the entrance door in the RV coach. Be familiar with its location and operating instructions as printed on the extinguisher. It's too late to become familiar with an extinguisher when an emergency is at hand.

The fire extinguisher is a dry chemical, non-refillable extinguisher. Do not test this extinguisher. Doing so will cause loss of pressure making the extinguisher unusable. The extinguisher must be discarded and replaced by a new one if any use has occurred.

SOFT SHADES

Soft shades are located at each window and can be opened and closed by pressing the small buttons on each side of the black locks and drawing drape up or down to the desired position.

WARNING: Keep soft shades in the upper most position while cooking on the range top to prevent fire hazards.

WARNING: Never leave small children in the camper unattended. Children can become entangled in the soft shade cords.

OPENING YOUR CAMPER

After parking your Jayco camper, disconnect the coach from the tow vehicle. The camper should be on level ground and the tires blocked so the camper will not roll before you begin setting up the camper. **DO NOT USE YOUR STABILIZER JACKS TO LEVEL THE CAMPER.** (See #4 under "SET-UP") **THEY ARE INTENDED TO STABILIZE THE UNIT AND WILL NOT SUPPORT ITS WEIGHT.** If your camper is not level, you may experience difficulty with set up, particularly with the fit of the entrance door.

IMPORTANT:

We recommend that well in advance of any trip, your camper be set up at home and the tent hosed down with water thoroughly. After the tent dries, repeat the soaking process three additional times. This process acts to season the canvas and seam areas. You may see a mist form if you spray directly on the canvas with a high pressure hose. If you do not follow this procedure, you may experience water seepage during the first few exposures to rain. Let dry thoroughly before storing to prevent mildew & odors. If you note any water seepage or leaks after seasoning your tent, let the tent dry, then spray Scotch Guard Fabric Protector® on the **INSIDE** of the seams where seepage occurs. One or two applications may be necessary to stop all water seepage in seams where thread enters the fabric. **NOTE:** Touching the canvas when it is wet can cause leakage. If leakage persists, please contact your dealer for assistance.

1. Unfasten each corner latch.

CAUTION: Never attempt to crank up the roof until all four corner latches are unlocked and free. Fig. 1. **NEVER LIFT ROOF WITH CARGO IN PLACE.**

2. Insert the crank into the square tube and turn in a clockwise direction to raise. Square tube is located at front of A-Frame behind coupler.
3. Continue cranking until the limit cable is almost tight. The gray limit cable is located directly above the crank position. Fig. 2
4. Now release spring loaded, self-storing stabilizer jacks. Base of this jack is attached to frame. Grip jack and push toward center of camper approximately 5/8". It will require a fair amount of effort to release and swing down as in Fig. 3. Now extend the jack "foot" by pushing it to the ground. More tension can be placed on the jack feet by using the long jack handle supplied in each unit. Ensure that too much force is not applied to the jack handle. Doing so may cause the holes in the jack legs to expand, breaking out the dividers and causing adjustment problems in the entrance door. One notch should be sufficient. **DO NOT** place excessive weight on these jacks as they are intended to stabilize, not support the camper. The camper should be level.

NOTE: To maintain stabilizer jacks, keep clean and lubricate twice per year.

5. On camper models using a curved or preformed bed brace, we suggest you place support into position before pulling bed out. Place flattened end into slot prepared on frame. Place 90° bent hook into bracket attached to front wall.
6. Pull end bunk beds out until rail hits bed stop. Distribute awning panel over bunk and place corners of tent over corner of bed. Again, be sure beds are now extended all the way out against stops.

WARNING: Do not use bed bow support poles if bent or damaged. Replace all damaged support poles.

7. Place flattened end of bed support pole into slot provided on frame of camper. Place angled and smashed end of straight bed support pole into bed bracket near outer corner under plywood bunk bed.
8. Now, complete raising roof until gray limit cable is snug. **DO NOT OVERTIGHTEN.** Fig 2
9. Enter unit and insert bed bow support pole at bow peg. Push bow outward and upward while pressing on button farthest from the end and slip into bracket mounted on roof. Release button. Fig. 4
10. Unlatch twist locks holding door to roof. Swing down the double hinged, self-storing screen door. Drop channel of lower edge of screen door over entrance door, guiding locating pins into door jamb extrusion. If door does not align properly, check stabilizer jacks to make sure they are adjusted correctly and check camper for levelness.
11. Insert canvas by folding the hard edge of tent over 180° and inserting this portion into channel of screen door, starting at the bottom. This assures the best possible fit.
12. Set up kitchen flip-top.
13. Exit unit and pull bed flaps over corners of bed until flaps are extended under the bed. Securely attach Velcro.

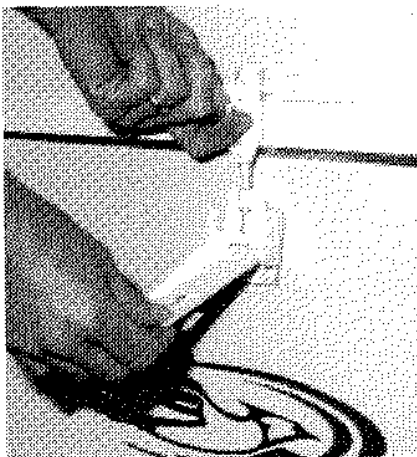


Fig. 1

WARNING: Ensure that all Velcro fasteners are mated and securely fastened. Loose areas could result in openings large enough for an infant, child or adult to fall through. Never leave small children in the camper unattended.

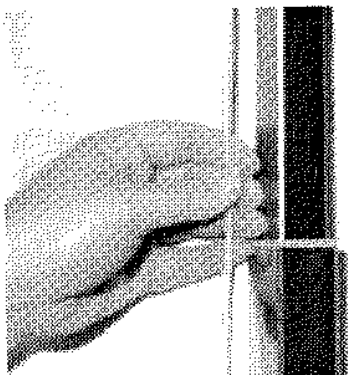


Fig. 2

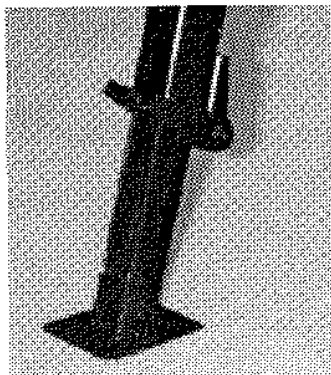


Fig. 3

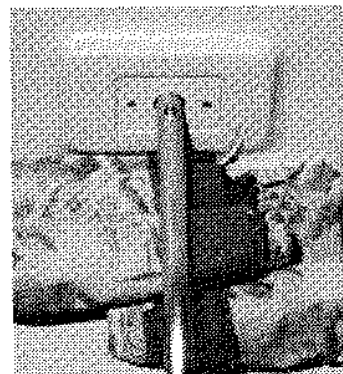


Fig. 4

Closing Camper for Travel

INSIDE

1. Enter camper and remove canvas from screen door by pulling canvas away from channel, beginning at the TOP of door, proceeding to bottom.
2. Swing screen door up to roof and latch the twist locks.
3. Zip all windows closed.
4. Roll all privacy drapes to the ceiling by pressing both buttons on either side of the black locks and drawing the locks upward.
5. Remove bow braces from bracket on the roof and pull brace to center of coach. Remove from peg on bed bow. Place bows under bed mattress. Fig. 4
6. Remove stove.

OUTSIDE

7. Loosen any tension on stabilizer jacks by pressing adjustment tab on jack downward. Using both hands, slide telescoping foot upwards fully. Pull jack downward 5/8" and swing towards center of camper until spring loaded catch slips into slot. Fig. 3.

NOTE: Road dirt and grime will sometimes make these jacks difficult to operate. You may need to clean out before operating. Use only silicone lubricates as oils will attract dirt and cause additional problems.

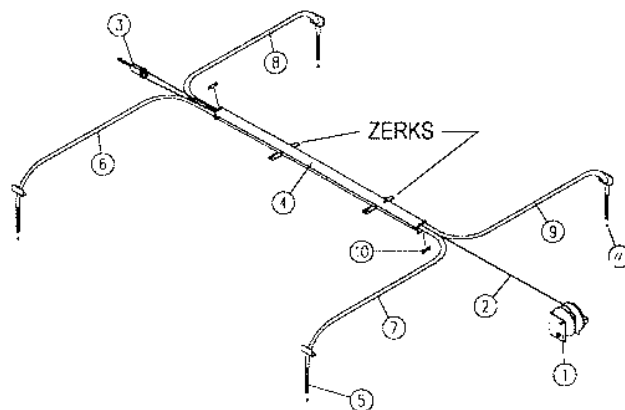
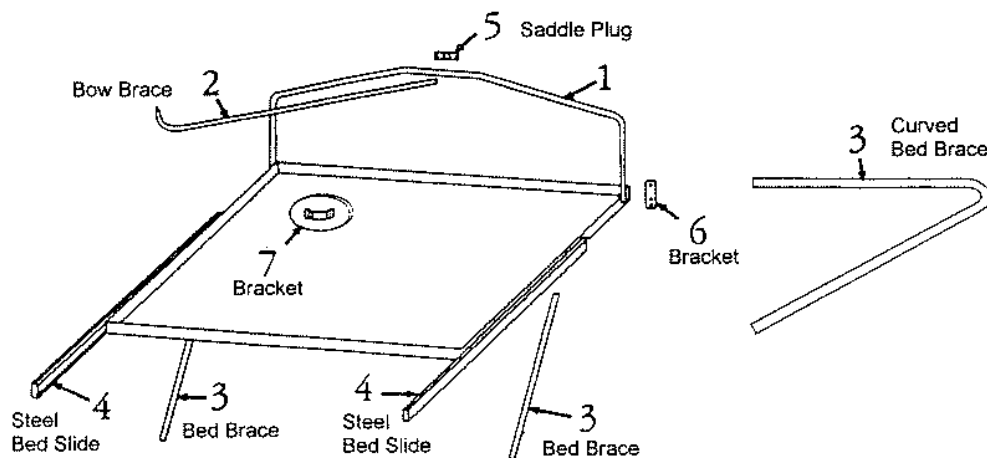
8. Unfasten Velcro bed flaps.

<p>CAUTION: DO NOT push bed in until ALL Velcro is detached. Push bed in COMPLETELY before beginning to lower roof. Failure to push the bed in completely BEFORE lowering roof can damage tent components. This damage is not covered by your Jayco Limited Warranty.</p>
--

9. Remove straight bed braces and push beds in carefully and completely.
10. Remove curved bed braces. Place all braces under bed mattresses carefully.
11. Lower roof half to two-thirds down. Reach inside and distribute awning panel of tent and drape EVENLY across bunk beds.
12. Continue to lower roof until final 6-8". Using both hands and arms, push tent from each side, front and rear, into the center of camper evenly and carefully continue to lower roof.
13. Attach roof latches to clips. Due to air pockets, the roof may need to be pushed down with your hand the last 1-2".
14. Before removing crank, tighten cable system by turning crank in the "UP" movement. This will place slight tension on cable system and avoid cables becoming loose and entangled.
15. Remove crank and place in storage area inside camper.

CAUTION: Excessive snow, 8" or more, or ice, 2" or more, places excessive weight on roof. Such excessive quantity of snow or ice should be removed as needed. Care **MUST** be exercised as not to damage roof material when removing snow & ice. Excessive weight can damage the roof, seals, etc. Water leaks and poor fit or operation are the results of this damage.

Parts List For Front Beds



- 1 = WINCH DLB1200
- 2 = CABLE ASSEMBLY
(8 QWEST - 184") (10 QWEST - 222")
- 3 = PULLEY ASSEMBLY
- 4 = MASTER TUBE ASSEMBLY
- 5 = SPRING PUSH ROD
(8 QWEST - 108") (10 QWEST - 110")

- 6 = SPRING TUBE ASS'Y - ODS REAR
- 7 = SPRING TUBE ASS'Y - ODS FRONT
- 8 = SPRING TUBE ASS'Y - DS REAR
- 9 = SPRING TUBE ASS'Y - DS FRONT
- 10 = TIE BAR
- 11 = 5/16 X 3/4 RIVET

CANOPY INSTALLATION AND SETUP

Before installing canopy, note these two observations for correct installation.

1. Three or more brass grommets are installed in the vinyl bag for breathing purposes. Grommets must be on the lower side.
2. Zipper tab in closed position will be in the rear of the camper.

Install

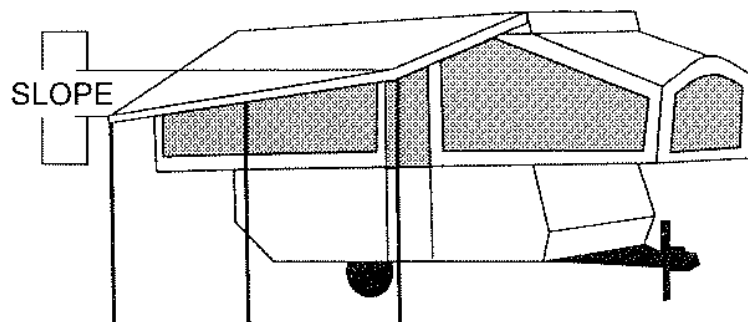
1. Slide the hard round plastic extrusion into rail mounted to roof.
2. Position the front end of the canopy even with the rail at the front end.
3. Drill 1/8" hole, 2" from front of unit, through aluminum rail and plastic extrusion.
4. Insert one screw (8x1/2" P/H, pan-head, Part #0051594) through the hole to hold the canopy in position.



CARING FOR YOUR CANOPY

Rain Damage

Heavy rain can damage both the canopy fabric and the poles if it is allowed to "pocket" in the fabric. It is very important to have the correct slope in the canopy. The side of the canopy at the twist poles should be about 19" lower than the side that attaches to the awning rail on the roof. If heavy rain is anticipated, lower one side to allow adequate run off.



Setup – Fold-Down Self Storing Canopy

Your canopy has been designed and built with quality material to give you years of trouble free service with low maintenance.

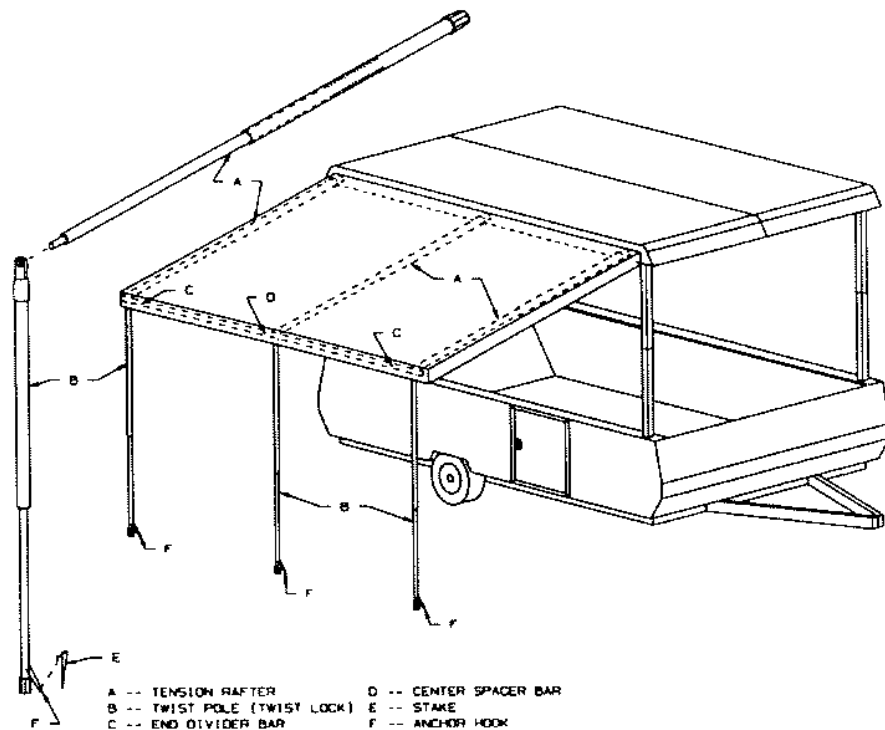
Read these instructions fully before beginning setup. Become familiar with each pole, its description and where it belongs. Refer to Fig. 1

One person can do the setup, but two people will make it easier.

1. Open zipper and unroll canopy fabric.
2. Insert the two end divider bars "C" (with gray caps) and center spacer bar "D" (7/8" tube) into front pocket of the canopy. These bars may be left in the canopy during travel or storage, but should be removed during winter storage to avoid corrosion.
3. Assemble the two parts of a tension rafter, Pole "A." Insert the peg through the "eye" of the twist pole "B" and then through the hole in the middle of the center spacer bar "D." Compress tension rafter and place in the center of the roof side board, as pictured. The rubber tip from the tension rafter will rest against the roof metal or the canopy bag.
4. If no screen room is being installed, repeat step #3 on the front and rear tension rafter, inserting the end of the tension rafter through twist poles "B" and the end divider bars "C." Position tension rafter as in step #3.
5. After all the poles are installed:
 - a) Adjust the canopy to fit properly.
 - b) Adjust the height of the canopy with the twist lock poles.
 - c) Install the three stakes to anchor the canopy in case of strong winds.

CAUTION: Always install the stakes to avoid wind damage to the poles and the fabric. In severe wind it is best to remove the canopy. Wind and rain damage are not covered by warranty.

Fig. 1



SCREEN ROOM

Installation Instructions (All Models)

Setup

1. The canopy and hardware must be installed and setup through step #3 before attempting to attach the screen room. (See Canopy Installation and Setup.)
2. Open, unfold and spread screen room under canopy area. Enclosure must be on the outside of the twist poles. A grassy area or clean floor is suggested.
3. Each upper side panel has a pocket sewn into fabric. Slide a two-piece tension rafter into pocket with the white crutch tip to be placed against side panel of the roof. Insert crutch tip at outer edge, and push in toward unit.
4. Insert peg through the "eye" of the twist pole "B" and then through the hole at the outer end of end divider bar "C". The white rubber crutch tip will rest against roof metal or the canopy bag. Install both ends.
5. Attach the Velcro hook sewn to the inner side of canopy to the Velcro loop sewn to the outer side of the screen room, full length.
6. **If this is the first installation on this unit, please turn to the next page and perform the First Time Installation. Then continue with step #7 below.**
7. Ensure all snaps are secure, fastening skirt to frame of unit.
8. Attach Velcro from skirt to Velcro on screen room lower corners.
9. Adjust three twist poles "B" so bottom of screen room is just touching the ground.
10. Install the 7 stakes through the screen room loops to protect against wind damage.

Guide to Screen Room Care and Usage

Care should be taken when setting up and putting screen room away to avoid tears and cuts. When putting away the deluxe screen room, the curtains should be in the down position and secured to the bottom with their strings.

1. Wash off any droppings or foreign matter from the trees with clear water and keep vinyl clean when putting away.
2. Do not roll stakes or hardware with the screen room.
3. Never roll vinyl screen room up wet for any extended period of time.
4. If mildew is apparent, it should be treated promptly with a light solution of Naphtha soap and water. A soft brush or cloth is recommended for cleaning vinyl. Lysol spray is a good option as well.

Fiberglass Screening

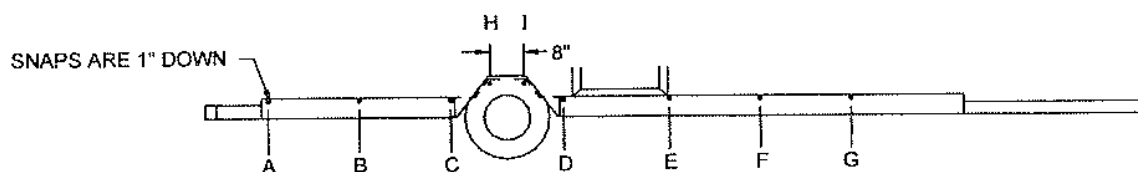
When possible, fiberglass screening should be loosely folded, not crushed when opening and putting away screen room. Do not allow poles and stakes to punch holes in the screen.

First Time Installation

1. Unwrap fabric skirt.
2. Using the placement chart below, drill 1/8" holes through the side of the steel frame located 1" down from the bottom of the floor. Point "A" is drilled at 1-1/2" from the edge of the rear frame member. All other measurements are measured from the preceding point.
3. Drill two 1/8" holes 8" apart in the wheel well area on the underside of the opening (Points "H" and "I"). Place these in the most convenient areas available. (Not required on slideout units.)
4. Insert screw snap studs into holes.
5. Cut the 1/8" vinyl strip into equal pieces with one stud per piece. Secure the strips to the snap studs during travel to protect them from road dirt.

MODEL	A	B	C	D	E	F	G	H
8 QWEST	1-1/2"	16"		42"	65"	84-1/2"		
10 QWEST	1-1/2"	14"	27"	52-3/4"	77-1/2"	94-1/2"	108-3/4"	

Snap Hole Location



CHAPTER 4

THE SYSTEMS

WATER & PLUMBING SYSTEM

Fresh Water

Available in your Jayco fold-down camper are several types of fresh water containers and filling methods based on options purchased. Each type is explained below along with its operation.

1. A five gallon portable water jug is located inside the cabinet nearest the sink. A 3/8" non-pressure hose is attached to the container.

CAUTION: Overfilling the tank can potentially pressurize the container and cause leakage.

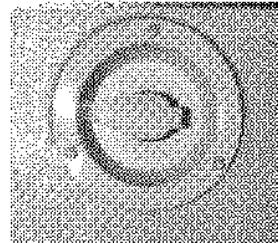


Fig. #9

2. Water may be received into the system through a direct hookup, referred to as "city water hook-up," (Fig. 9) when attached to entry supply and water hose.
3. Operation of hand pump:
Tank Water - place handle into vertical position, using short strokes. Allow 10-20 seconds to prime pump and fill the water lines before filling sink.
4. City Water - move handle down slowly to open "CW" valve. Hold in this position for quick use. Press down completely to lock for continuous water flow.

WARNING: Handle should be in the TANK WATER position when connecting City Water to avoid City Water spill.

Depress handle while traveling. Spout will swivel over 90° for your convenience. The spout is NOT a handle.

WATER PRESSURE REGULATOR

Due to the possible existence of high pressure in some campgrounds (80 psi and higher) you may wish to use a removable 35-45 pound water regulator. Water systems in RVs are tested at 100 pounds as specified by RVIA codes.

CAUTION: Not using a water pressure regulator when using the city water fill may cause the o-rings to blow. It is advisable to always utilize a water pressure regulator with the city water fill.

SANITIZING POTABLE WATER SYSTEMS

To assure complete sanitation of your potable water system, it is recommended that the following procedures be followed on a new system, one that has not been used for a period of time, or one that may have become contaminated.

1. Prepare a chlorine solution using one gallon of water and 1/4 cup of household bleach (5% sodium hypochlorite solution). Pour one gallon of solution into tank for each 15 gallons of tank capacity.
2. Complete filling of tank with fresh water. Open each faucet and drain cock until all air has been released from the pipes and entire system is filled.

3. Allow to stand for three hours.
4. Drain and flush with potable fresh water.
5. To remove any excessive chlorine taste or odor which might remain, prepare a solution of one quart vinegar to five gallons water and allow this solution to agitate in tank for several days by vehicle motion.
6. Drain tank and again flush with potable water.

CAUTION: Chlorine solution concentrations exceeding recommended levels may damage the water system.

DRAINAGE - FRESH WATER

Portable water containers need to be removed from cabinets and physically emptied. Permanent water tanks may be drained through a valve located near the tank. Any camper with a demand pressure pump system will have low-point drains attached to water lines normally located near the water tank. These low-point drains will release water in the supply lines by opening the valves and all faucets. The water heater has its own water drain plug.

DRAINAGE - WASTE WATER

Connect a hose to the drainage outlet (Fig. #11) and drain sink either to a container to hold waste water or to a direct sewer inlet supplied by some campgrounds. Most campgrounds and some states prohibit sewer water drainage onto the open ground.

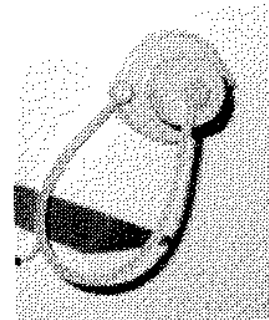


Fig. #11

Winterizing Camper

NON-POWER SUPPLY SYSTEMS

1. Drain tank. The remaining small quantity of water in a plastic tank will not damage tank by freezing.
2. Ensure all water has been drained from the hand pump by using an up and down motion. No anti-freeze is needed for hand pumps.
3. Pour one pint of non-toxic anti-freeze into trap to ensure that the small amount of water left in trap assembly does not freeze.
4. Faucets should be left in the open position to allow air movement until dry.

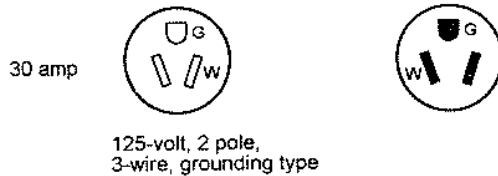
DRAIN TRAPS

Since not all water can be drained from sinks and shower trap assemblies, pour 1 pint of non-toxic anti-freeze into traps.

WARNING: DO NOT use Ethylene Glycol (automotive anti-freeze) or Methanol (windshield washer anti-freeze) in your fresh water system because they are harmful and MAY BE FATAL if swallowed. USE ONLY NON-TOXIC ANTI-FREEZE.

ELECTRICAL SYSTEM

The electrical system in this fold-down is composed of 120-volt AC (alternating current) and 12-volt DC (direct current) capabilities. All installations are made in compliance with safety requirements of ANSI standard A.1192, National Electric Code, and Canadian Standards Association.



Changes, Modifications and Additions

Any changes or additions made after delivery may cause a hazardous condition. Be sure to consult your local authorized dealer. Only qualified electrical technicians should attempt to make changes or additions to our electrical system, using only approved materials, components, and employing approved methods of installation, which meet safety and code requirements.

120-Volt AC System

Your camper is equipped with a power cord prewired into the convertor. By opening cable hatch door (Fig. #13) you can pull the power cord out from compartment and attach to a power supply. Power cord is rated at 30 amps and is protected with a 30A circuit breaker. This supplies 120-volt AC power to camper receptacles built into walls and cabinet. Cord extends at least 20' from camper depending on floor plan.

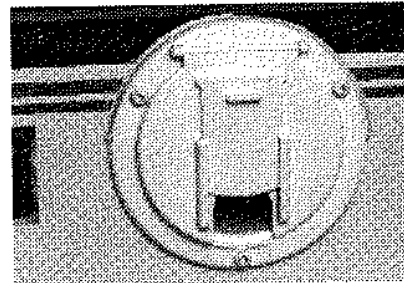


Fig. #13

Extension cords should always be a heavy gauge of wire equal to the power cord. Usage of too small a cord will result in overheating and possibly burning of the cord. **DO NOT** leave an unused portion of an extension cord in a coil as it may overheat, short out wires, and potentially destroy your extension cord.

WARNING: Do not use an adapter, cheater, or extension cord that will break the continuity of the grounding circuit connected to the third pin. NEVER remove the grounding pin to connect a non-grounded, two-prong receptacle.

Each unit contains a Ground Fault Current Interrupter (G.F.C.I.) outlet. This special breaker has been designed to reduce the possible injury caused by electrical shock.

An example of ground fault current is the current which would flow through a person who is using or touching an appliance with faulty insulation and, at the same time, is in contact with an electrical ground such as a plumbing fixture, wet floor, or earth.

The G.F.C.I. breaker will not protect against short circuits or overloads. The circuit breaker or fuse in the electrical panel which supplies power to the circuit provides this protection.

When the G.F.C.I. breaker is tripped, it has interrupted ground fault current caused by such things as faulty insulation or wet wiring inside some appliance or equipment connected to the circuit. The faulty equipment should be repaired before is it used again.

This special breaker should be tested monthly while the camper is being used. See the manufacturer's owner's manual for more instructions.

To prevent accidental electrical shock, insure that the ground pin on the attachment plug cap is intact to the earth ground through the RV park receptacle. When plugged into a receptacle with no provision for the third pin, use an adapter with a pigtail that can be connected to the receptacle box, with the grounding circuit completed through the ground pin or RV park receptacle box. Any accidental short of a live circuit conductor will trip the circuit breaker indicating a shorted circuit. You should be certain that the polarity of the external power is not reversed, in order to avoid harm to appliances and personal electrical shock. Polarity indicators may be purchased in most electrical and hardware stores.

WARNING: NEVER, under any circumstances, remove the ground pin (3rd pin) from any connector plug. It could mean the difference between life or death.

Air Conditioner (Optional)

To meet State, National, and RVIA codes as well as support from manufacturer of camper, you need to have installed a special kit to provide proper operation and energy for successful enjoyment. To comply with all applicable codes, it must have the following:

1. 20 amp receptacle with 12 gauge wire.
2. 20 amp power cord to feed air conditioner.
3. Two twist caps.

The weight limit for air conditioners is 110 lbs. Exceeding this weight can damage the roof and lifter system which will not be covered by your Jayco Limited Warranty. DuoTherm and RVP brands usually are acceptable for fold-down roof installations. Other brands may be used if the weight is 110 lbs. or less and the interior shroud fits around the roof components.

BTU	DuoTherm BriskAir	DuoTherm Penguin	Coleman
7,100	74 lbs.	88 lbs.	75 lbs. use #6727
11,000	92 lbs.	104 lbs.	92 lbs. use #6757 A, D, or E Series
13,500	96 lbs.	109 lbs.	95 lbs. use #6757 A, D, or E Series

WARNING: Any electrical installation that does not meet the criteria may damage the electrical system and cause problems which will not be covered under your Jayco Limited Warranty.

WARNING: Follow the wiring listed below as it attaches to the air conditioner.

Outer Smooth Protective Covering	=	Positive Black
Outer Ribbed Protective Covering	=	Neutral White
Center Smooth Protective Covering	=	Ground Green

Failure to wire as specified will send reversed polarity in the air conditioner, causing a potentially dangerous situation with the possibility of fire.

Follow the air conditioner installation instructions as supplied with the air conditioner. Connect the 20 amp power cord to the air conditioner as listed above warning. Notch the interior air conditioner shroud so the cord can pass between it and the roof. Using p-clamp, secure the cord to the outer edge of ceiling and let it hang down the side of the tent. It is code violation to run the 110v cord through a conduit of any type of covering. The cord must be visible.

12-Volt DC System

The 12-volt system is composed of numerous items such as convertor, battery, fuses and lights. Explanation on these items will follow in this section.

Convertor – The convertor utilizes 120-volt AC power and transforms this energy into 12-volt DC power, which is used inside of the camper. 12-volt energy supplies power to all lights, furnace blower, optional water pump.

The converter is a technologically advanced 12-amp PWM “switch mode” type, that can be used with computers. It is self-contained with a built in circuit breakers and DC fuses. A quiet cooling fan provides ventilation and is thermally protected to shut down and cycle back on if overheating occurs.

WARNING:

- Turn off all interior lights before folding the camper for transit as the bulbs may cause a fire hazard in the folded position and burn holes in tent.
- Do not block converter ventilation.

Battery Charger

The convertor will automatically monitor and charge the auxiliary battery up to a 20-amp rate. In order to maintain the battery, one of two things is recommended:

- The battery can be stored in a fully charged condition.
- The battery can be hooked to a battery charger once per month.

Battery terminals and connectors, including vehicle frame connections, should be cleaned thoroughly, securely fastened, and coated with a silicone dielectric compound or petroleum jelly.

Interior

All 12-volt power comes from the convertor or the black lead in the wire harness from the tow vehicle battery. Remember, to receive power from the convertor you must have a 120-volt energy source available. 120-volt power may be turned off or on by switching the 120-volt breaker in the convertor.

Batteries (Optional)

All Jayco fold-down campers are pre-wired to accept an auxiliary battery if so desired. The battery must be hooked up directly to red (positive) and white (negative) wires on trailer hitch, harness and frame using nothing less than 10 gauge wires.

The auxiliary battery may be installed to avoid discharging tow vehicle battery when 110-volt power is not available.

Campers with power lift system will have a battery and box installed as part of the option package.

All battery packages installed by the manufacturer will have an "in-line" fuse and holder included for protection. On power lift system a 30 amp assembly is included and 20 amp assembly will be used on other camper battery packages.

CAUTION: When drawing current from the tow vehicle battery, be sure to avoid draining battery to a low point that the tow vehicle will not start.

All Jayco fold-down tent campers have ceiling light circuit directed through a master shut-off switch to prevent 12-volt current flow to ceiling lights with roof lowered. Periodically test light and switch to be sure switch adjustment is correct. Switch is located along bottom edge of roof on left (road) side.

WARNING: The convertor output is not intended to power the optional 3-way refrigerator. when the fold-down is parked and the power cord is plugged in, set the 3-way refrigerator to "AC Power." A "DC" mode is to be used when traveling and will pull its power from the auxiliary battery charge line. While camping without available AC power, utilize the "LP Gas" mode.

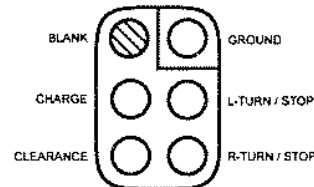
Please note, battery warranties are prorated.

Trailer Hitch Plug

All exterior vehicle lights are 12-volt and wired in accordance with the standard accepted color code:

6-Way Poly Mold with Cover

10G WHITE	Ground
16G RED A	LH Turn/Brake
16G BROWN	RH Turn/Brake
10G RED	Charge Line
16G GREEN	Running
12G LIGHT BLUE	Brake



The connector between tow vehicle and trailer may build up corrosion over a period of time. This is caused by weather elements, and should be cleaned occasionally to insure good electrical contact.

For the electric brake option, a brake controller must be installed to power the blue wire when the brakes are applied. Included is a brake-away switch for emergency stopping. See your dealer for installation.

Fuse and Bulb Chart

FUSES

Operation	Location	Circuit Number	Fuse Size	Type
Furnace	in convertor	3	15	Blade
Battery Pac (exterior)	in line by battery	4	20	Blade
LP Detector	Behind LP	N/A	1	Blade
Refrigerator	in convertor	2	15	Blade
Ceiling Lights	in convertor	1	15	Blade

Some components listed above are options.

BULBS

Exterior	Porch Light	#912
Exterior	Tail Light / Signal	#1157
Exterior	Clearance	#194
Interior.....	Interior Ceiling	#921

WARNING: Do not replace circuit breakers or fuses with a higher current rating than those supplied with the new camper. Over-fusing can cause a fire hazard by overheating the electrical wiring.

When attaching wire leads to a tow vehicle, carefully insulate all connections for protection. Follow the instructions on instruction sheet provided with covered harness.

LP FUEL SYSTEM

Fuel system has numerous components such as, containers, hoses, regulator, piping and copper tubing lines to each appliance. Each of these components will be explained in appropriate area.

Several fuels are available to be used in recreational vehicle appliances, but none adapts better than "liquefied petroleum" referred to as LP gas. This product is refined from crude oil through natural gases. In its gaseous (vapor) form, it is colorless, and odorless. An agent has been added for detection should a leak develop or a valve be left opened. It is important for a recreational vehicle owner to recognize and know the odor of LP vapor.

Butane CAN NOT be used as the boiling point is 30° and will not function in freezing conditions.

LP fuel is stored in liquid form under high pressure. Boiling point is -44°, the temperature when vapor ceases to flow. Fuel will change to vapor when released from container. Appliances are not designed to operate with liquid. Liquid will damage o-rings in valves and also leave sticky, oily residue causing poor or no operation in regulator.

LP Container

Tank or bottle is a D.O.T. approved container to hold fuel in liquid form, and is normally a 20# or 30# capacity. Opening/closing valve is to be closed at all times unless hooked up to LP gas system or filling container.

Do not allow container (filled or empty) to move or roll around while transporting to and from filling location.

Servicing and Filling LP Containers

Filling a LP container correctly is very important and should be performed only by a qualified person who knows the proper safety procedures and inspecting containers. Any new container must be carefully purged for best performance and must **NEVER BE OVERFILLED**.

An overfill device is built into main valve on current containers for filling purposes. This valve is referred to as the “10%” valve. This valve must be opened during filling. When container reaches 80% of correct capacity, liquid will appear replacing vapor. Immediately filling must be stopped, closing both valves **HAND TIGHT ONLY**. Then disconnect fill hose.

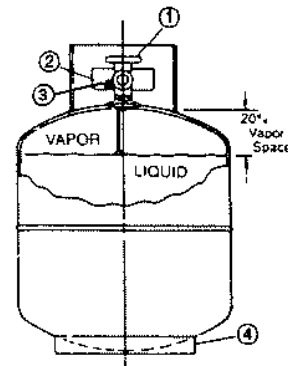
When refilling containers, they are generally removed from LP compartment or tie downs. **BE SURE** to reinstall correctly and test for leaks at LP container.

Before removing bottles for filling, turn off gas at bottle and turn off all appliances.

When LP gas containers are filled to 80% level there is available space for safe expansion of the vaporized liquid. If your tank becomes overfilled and is not allowed to “bleed off” before installation with the RV system, it may gain pressure due to exposure to hot sun rays and will begin “blowing off” pressure from the overflow valve. This can be detected by the strong odor around tanks. Keep open flames away from this area. It is best to remove the bottle, take it to a safe area, and “bleed off” the excess pressure by opening the valve and closing it when discharge has been sufficient.

Handle your LP tanks with care. When disconnecting, you must turn the wrench in a clockwise direction because the connection utilizes left hand threads. When reconnecting, turn wrench counter-clockwise. When tightening, only “snug-up” – avoid over tightening. The tanks must be in an upright position at all times.

1. Knob to open valve to fill or to use camper.
2. Complete valve assembly.
3. “10%” valve, small brass knob or slot screw.
4. Container mounting stand.



WARNING: Your vehicle has exterior combustion air inlets. Appliance pilot lights should be turned off during gasoline or LP gas refueling. (Required by law in some states.)

A warning label has been located near the LP gas container. This label reads:

THIS GAS PIPING SYSTEM IS DESIGNED FOR USE OF LIQUEFIED PETROLEUM GAS ONLY. DO NOT CONNECT NATURAL GAS TO THIS SYSTEM. DO NOT FILL CONTAINER(S) TO MORE THAN 80 PERCENT OF CAPACITY. Securely cap inlet(s) when not connected for use. After turning on gas, except after normal container replacement, test gas piping and connections to appliances for leakage with soapy water or bubble solution. Do not use products that contain ammonia or chlorine.

AD-34

**ALL GAS LINES HAVE BEEN
CHECKED WITH AIR PRESSURE.
DEALERS ARE REQUIRED TO
RECHECK AND ADJUST PRESSURE
BEFORE DELIVERY TO CUSTOMERS.**

WARNING: Do not fill container(s) to more than 80 percent of capacity. Overfilling the LP gas container can result in uncontrolled gas flow which can cause fire or explosion. A properly filled container will contain approximately 80 percent of its volume as liquid LP gas.

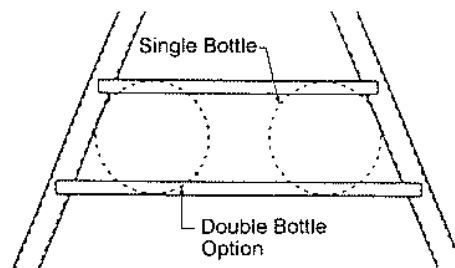
WARNING: LP gas containers shall not be placed or stored inside the vehicle. LP gas containers are equipped with safety devices which relieve excess pressure by discharging gas into the atmosphere. Do not bring or store LP gas containers, gasoline or other flammable liquids inside the recreational vehicle. Disregarding this warning may result in fires or explosions.

CAUTION: Never smoke during the filling of LP tanks. Keep the RV away from immediate filling area when possible or extinguish all gas pilot lights.

When an LP tank gets low, sometimes there is a concentration of garlic-like odor which may be mistaken for a gas leak. After a change over to a full tank, the odor usually will disappear. If not, turn off the LP and have the system checked by a qualified technician.

Installing LP Containers

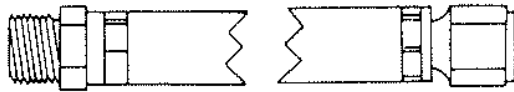
1. Place container onto steel angle rack.
2. Insert 2- $\frac{1}{4}$ " x $\frac{1}{2}$ " bolts through hole in center of angle.
3. Attach lock washer and nut onto bolt.



CAUTION: Ensure that all fasteners are secured before traveling.

Main Supply Hose

The main supply hose will be attached from regulator to brass manifold fitting in frame of coach. Swivel brass nut on main hose will be your final attachment. There are several things to remember each time the container is removed:



3/8" MPT x 1/2" Female
Flare Swivel

1. Check that ALL fittings are tight.
2. Ensure that ALL connections are tested with leak solution.
3. Open main valve slowly to avoid fast rush of gas to excess flow valve causing gas freeze up.
4. Listen carefully - a "hissing" sound longer than 1 second may indicate a gas leak. Close valve and search for leak.

Keep container valve(s) closed when traveling. Some states prohibit traveling with LP container, especially in underground tunnels on expressways.

Regulator

The regulator is the heart of your LP gas system with internal moving parts. The function is to reduce high and varied pressure from the LP container to safe and consistent low pressure. First stage reduces pressure to 10-13 pounds and second stage to 11" W.C. (water column) or 6.35 oz. of outlet pressure.

Second stage regulator will need to be adjusted for precise operation periodically or bi-annually. DO NOT make any attempt to adjust regulator without a manometer. A manometer is needed to read pressure. Should pressure be too high, it affects performance and safety. Should pressure be too low, appliances will not operate correctly. Have only an authorized and competent technician make any adjustments.

WARNING: LP gas regulators must always be installed with the diaphragm vent facing downward. Regulators that are not in compartment have been equipped with a protective cover. Make sure that the regulator vent faces downward and that the cover is kept in place to minimize vent blockage which could result in excessive gas pressure causing fire or explosion.

If you travel alternately on wet roads and in freezing weather, be sure your LP gas regulator is protected from road spray. If water enters the vent in the regulator, it may freeze the pressure controlling diaphragm in the open position so that the container pressure is applied to the appliances – a hazardous condition. Follow the instruction given by the manufacturer of the regulator.

Operation

After the camper is completely set up and you are prepared for camping enjoyment, follow these steps for LP gas operation.

1. Close ALL burner valves, controls and pilot light valves.
2. Open main valve on LP container slowly to avoid fast rush through excess flow valve causing "gas freeze." Should you experience a gas "freeze-up," close main valve and wait 15 minutes before trying again.
3. Listen carefully as gas begins to flow. If "hissing" is heard for more than one or two seconds, close valve and search for leak.
4. Light appliances as needed and directed in appliance chapter.

CAUTION: If you have double bottles on your RV, use only one at a time. Otherwise the gas supply will be drawn equally from both bottles until supply has been totally exhausted. Using one bottle until it is empty, then using the second bottle will allow you to fill the empty bottle at your convenience without being totally out of propane.

WARNING: Portable fuel-burning equipment, including wood and charcoal grills and stoves, shall not be used inside the recreational vehicle. The use of this equipment inside the recreational vehicle may cause fires or asphyxiation.

When an LP tank gets low, sometimes there is a concentration of garlic-like odor which may be mistaken for a gas leak. After a change over to a full tank, the odor usually will disappear. If not, turn off the LP and have the system checked by a qualified technician.

Checking For Leaks

Upon delivery and periodically thereafter, check your gas system for possible leaks. Although the entire distribution system and its attached appliances have undergone factory testing for leaks, the camper is subject to road vibrations, which can cause connections and fittings to develop leaks. If you do encounter this odor, turn off all open flames immediately and begin a systematic search for leaks throughout the gas system. Use a bubble solution of soapy water, **without ammonia or chlorine** content, on connections and fittings. (**NEVER USE A MATCH** to check for leaks.) Bubbles will appear at the leaky points. When tightening connections, use two wrenches with opposing torque to prevent twisting of copper tubing. If the leak doesn't show up in the manifold or copper tubing distribution systems, then check the appliances. **WE RECOMMEND YOU HAVE YOUR LP SYSTEM TESTED AT LEAST ONCE A YEAR BY A QUALIFIED DEALER.**

IF YOU SMELL GAS

1. Extinguish any open flames, pilot lights, and all smoking materials.
2. Do not touch electrical switches.
3. Shut off the gas supply at the tank valve(s) or gas supply connection.
4. Open doors and other ventilating openings.
5. Leave area until odor clears.
6. Have the gas system checked and leakage source corrected before using again.

WARNING: It is not safe to use cooking appliance for comfort heating. Cooking appliances need fresh air for safe operation. Before operation:

1. Open overhead vent or turn on exhaust fan; and,
2. Open window.

This warning label has been located in the cooking area to remind you to provide an adequate amount of fresh air for combustion. Unlike homes, the amount of oxygen supply is limited due to the size of the recreational vehicle, and proper ventilation when using the cooking appliance(s) will avoid danger of asphyxiation. It is especially important that cooking appliances not be used for comfort heating, as the danger of asphyxiation is greater when the appliance is used for long periods of time.

LP Gas Consumption

Most gas appliances are only operated intermittently. Unless there is heavy use of hot water, water heater consumption is minimal. During freezing weather and high wind conditions, furnace consumption can be extremely high.

LP gas consumption depends upon individual use of appliances and the length of time operated. Each gallon of LP gas produces about 91,500 BTUs of heat energy. Following is a list of typical appliance consumption when turned on fully for one hour of operation:

Appliance	Average BTU Consumption Per Hour
Stove	6,500
Furnace	16,000 to 20,000

NOTE: This chart is an example of a typical system and may not represent the exact system in your particular unit.

Optional Double Bottles

Depending on the type of camping you may wish to enjoy, double fuel bottles may be desirable, especially in cool weather when using the furnace is necessary.

Optional Automatic Changeover Regulator

(FOR OPTIONAL DOUBLE BOTTLES ONLY)

The automatic changeover regulator allows both gas bottles to be turned on simultaneously. The arrow on the regulator handle indicates which bottle is in service. When the indicated bottle in service becomes empty, changeover is automatically accomplished to commence drawing fuel from the other bottle. At this point, the plastic window will display a red signal or flag to indicate the condition. The lever should then be flipped over to indicate service on the other bottle. The first bottle which was depleted can then be turned off, uncoupled and taken to be refilled without disturbing the RV gas supply. After refilling, it can be removed and again turned to the "ON" position. When the other bottle is depleted, the LP gas supply will again be automatically changed back to the first bottle.

WARNING: All pilot lights & appliances must be turned OFF during refueling of motor fuel tanks and/or LP Gas containers.

CHAPTER 5

APPLIANCES

STOVE

Some appliances are optional equipment and others are standard items, depending on model and floor plans.

In most fold-down campers a removable or portable stove and cabinet containing a two or three burner drop-in range for cooking purposes is included. This portable assembly may be used inside or outside of the camper.

As shown on the outside of the camper the portable assembly will be hooked to outside rail attached to wall panel. The two burner cabinet assembly is constructed from aluminum material and a brace is not required. The bottom part has two rubber or nylon supports and will rest against sidewall panel for support.

Handling Stove Assembly

1. Always carry cabinet assembly with both hands.
2. Mount cabinet onto rail at a 30° angle and slowly lower outer side until in horizontal position.
3. If applicable, attach brace to underside of stove and unit.
4. LP gas connections are made with a "Quick-Coupler" system with positive shut-off valve as required by code and standards.

Each stove assembly will have a hinged wind guard attached. Raise hinged assembly to vertical position. End panels are also hinged and will swing to outer edge of stove for wind protection, preventing flames from reaching tent material.

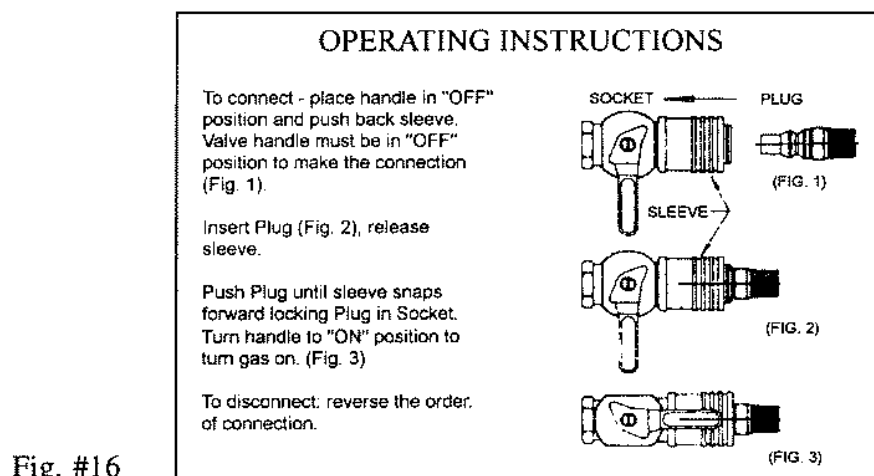


Fig. #16

Operating instructions for stove are below. Additional information can be found in manuals supplied by manufacturer of stove.

Operation of Stove

1. To light the top burners:
 - a. Turn the appropriate burner knob fully counterclockwise to the "Lite" position. Do not attempt to light more than one burner at a time.
 - b. IMMEDIATELY light the burner by holding a lit match or a hand-held spark igniter designed for this purpose near the burner ports.
 - c. Set temperature.
 - d. To extinguish the top burner flame, turn the appropriate burner knob clockwise to the "OFF" position.
2. To remove the stove top:
 - a. Loosen screws
 - b. Lift free.

NOTE: If flames lift off the burner there is too much pressure in the gas line, or if the flame flashes back into the burner tube there is not enough pressure in the gas line. Under both conditions, discontinue use and have your regulator checked by a qualified service center.

CAUTION: When cleaning any orifice or the burner assembly, care must be used to prevent damaging or enlarging the openings. Never use a wire or other metallic implement to clean an orifice or burner post. Any enlargement of an orifice or burner ports will affect the gas flow and, consequently, the burner's function.

WARNING: Test all fittings on LP gas lines for leaks using a leak detecting soapy solution without ammonia or chlorine content. DO NOT use an open flame, matches, or lighter for this purpose. Perform this test each spring before use, or have a qualified dealer perform a manometer test.

WARNING: Keep privacy drapes in the upper most position while cooking on the range top to prevent fire hazards.

CHAPTER 6

CARE OF BODY COMPONENTS

EXTERIOR ALUMINUM (Cedar Embossed)

The aluminum on the outside of your Jayco can be cleaned and washed the same as an automobile finish. It is suggested that a spray wax, or wash and wax combination, be used for waxing due to the texture of the aluminum. The textured aluminum siding will reduce excess scratching.

EXTERIOR ROOF

Weather elements, such as winter's freezing and summer's UV rays from the sun, cause sealants to dry out, shrink, and deteriorate. Three areas on your roof require maintenance to be performed to meet warranty coverage on fold-down roofs.

1. The roof aluminum skin material should be washed and polished to maintain its finish.
2. Any corner or center flat trim has putty sealer tape between metal and skin. This sealant must be examined and maintained yearly to avoid dry out and cracking. Remove any excess or cracked sealant or if it's peeling and lifting. Clean surface before cap sealing. **CAP SEAL AT LEAST TWICE A YEAR.** We suggest MS101, manufactured by Colormetic or similar sealer with good adhesive ability.
3. Trim on lower edge of roof is sealed internally and also has an outer cap seal. Should cap seal loosen, separate, or crack, it must be resealed with MS101 sealant.

NOTE: The putty tape and cap sealant used to seal between corner trim, doors, etc. is subject to weather and pollutant deterioration. You must examine and reseal yearly to prevent water leakage.

CAUTION: All roofs require maintenance. At least twice per year, inspect and reseal all seams including moldings, vents, doors and windows.

FRAME

The frame on your new Jayco coach has a water based paint. It is recommended you periodically inspect the exterior exposed areas, clean and repaint the steel members to insure long life. Road debris will chip paint, inviting rust and other deterioration. To prevent rust or corrosion, you may wish to purchase a commercially available rust treatment application such as Ziebart, etc.

DRAPES

Drapes should be dry cleaned by a professional for best results. However, they may be washed in cool water on delicate cycle. Line dry only.

CAUTION: Care must be taken to follow above instructions or results may not be satisfactory.

CUSHIONS

CAUTION: DO NOT DRY CLEAN VINYL COMPONENTS
CAUTION: DO NOT REMOVE COVERS FOR DRY CLEANING

If the cushions are dry cleaned, the vinyl on the reverse side of the cushion will shrink, become hard and crack. Vacuum fabric and wipe vinyl surfaces. The fabric side can be gently steam cleaned on the cushions or matts if necessary.

All dinette and bed matt covers are treated with stain protector. Vacuum cover with a brush attachment periodically to remove dirt.

INTERIOR CARE

Upholstery Fabrics

Please use common sense and treat your furniture as you would at home. Remember, your camper is a small living area, so soiling may occur more frequently and the fabric will probably need more attention than your furniture at home. Please follow these guidelines for cleaning upholstery fabrics.

Frequent vacuuming with a brush attachment or a light hand brushing will help remove dust, hair, sand and other particles which may dull the look of the fabric and accelerate wear.

Water base cleaners are recommended. If a spill does occur, blot up the spot, but do not rub it in. Solvents are not recommended since they may have an adverse reaction to the specific backings of your upholstery fabric. Do not saturate the area. Clean in a well ventilated area and avoid products containing carbon tetrachloride or other toxic materials. Always pre-test a small area before proceeding. Use a professional furniture cleaning service for an overall cleaning.

A reminder: The upholstery fabrics have been manufactured using quality materials. However, if abused, they are not completely resistant to damage.

Countertops

Made of high pressure laminate, the countertops are quite easy to keep clean. Glass rings, food spills, water spots and smudges usually wipe off with a damp sponge. Stubborn stains can be removed with a general purpose spray cleaner.

The laminated surface resists alcohol, fruit acids, cosmetics and most household chemicals. Avoid contact with dyes, strong laundry bleaches and bluing. Indelible inks used on food packages may stain, so take care when unpacking groceries, particularly on a damp countertop. Sharp knives may damage the finish thus confine slicing to a cutting board.

Hot pots and pans should be placed on hot pads or protective trivets. Never place a hot iron or lighted cigarettes on the countertop.

For lasting beauty, avoid using harsh abrasives, scouring powders, peroxide or bleaches. These may dull the surface thus making it more susceptible to staining.

Hardware and Sink or Shower Fixtures

Use mild dishsoap and water to clean these fixtures. Never use harsh chemicals or sprays, such as Windex or Pledge. A mild solution of vinegar and water works very well to remove hard water spots and stains from sink or shower fixtures.

TENTS – EXTERIOR

Canvas Material

The canvas (Bunk end window panels and sidewall window panels) used on all Jayco camping trailers is made of 10.10 ounce army duck cotton. It is treated to pass the required Federal Fire Retardant Standards.

If a dirty spot needs to be cleaned, use a damp cloth or sponge with water.

The canvas should not be washed with a detergent as it will remove the waterproof repellents and the fire retardant. Hair spray or insect spray will also remove repellent.

If the canvas comes into contact with contaminants, it will be necessary to re-treat the area to ensure water proofing. We recommend the use of Scotch Guard Fabric Protectant® or utilize a professional to provide water repellent treatment.

Be sure your canvas and trailer have good ventilation, especially after a rainy period. The most common cause of damaged canvas is mildew, which is the result of storing your unit for any period of time with a damp or wet canvas, even short periods. This is even more important in humid climates.

Vinyl Material

(EMBOSSSED VINYL W/TEXTILE BACKING FOR MAIN TENT)

Use non-abrasive cleaners with warm water and sponge to remove excess dirt and grime. Do not use cleaners with a bleach ingredient. Chlorine or bleach will strip the finish and color from your vinyl.

You may also use 3M Scotchguard® fabric protector on sewn seams in vinyl tents if water seepage occurs.

In any tent we recommend the following:

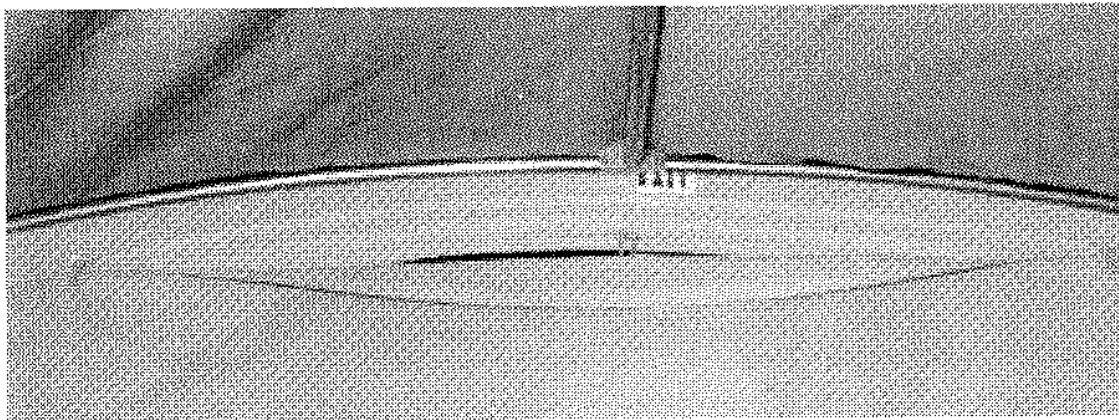
- DO NOT use harsh detergents, soaps or solvents since they may remove water repellency and damage the surface or color.
- DO NOT use aerosol type cleaners.
- DO NOT use insect repellent around fabrics as they may stain fabrics and damage or destroy water repellency.
- DO thoroughly clean bird droppings, tree sap, dirt and soot from campfires.
- DO apply 3M Scotch Guard® fabric protector any time accidental contact with insect repellants, hair sprays or suntan lotions occur.
- DO NOT fold down unit when wet for any extended period of time. If tent must be stored wet, open unit to dry thoroughly as soon as possible.

TENTS – INTERIOR

The material used on the interior of the tents is a 100% polyester backing. This material contains inhibitors that help prevent the growth of mildew on the fabric. Mildew or fungus may attach to the material, however, the material will aid in preventing the growth. If mildew does attach itself to the fabric, brush the mildew dust with a soft bristle brush. Then use one cup of regular household bleach to one gallon of water to thoroughly clean the area. Rinse with clean water.

Condensation in Tents

Condensation can be prevalent in tent campers if proper ventilation is not used. It is recommended that you leave a small opening in each bunk zipper to permit air to flow through and allow the tent to “breathe.” This will help minimize moisture gathering above bunk area on the vinyl.



Condensation can exist whether or not a heater is used.

TIRE COVERS - VINYL (Optional)

To minimize the possibility of the tire “bleeding” through onto the tire cover, we recommend use of a separator (garbage bag, paper, cloth, etc.) between the tire and the tire cover.

PANELING

The wall paneling is a vinyl covered wood panel. If deep scratches occur, they may be covered by using a thin film of shoe polish or stain, followed by a coating of furniture wax. Putty sticks are also available to cover scratches at your local hardware store.

To clean, use a mild solution of soap and lukewarm water with a soft sponge or cloth. Refrain from the use of abrasive cleaners as they may scratch and dull appearance. Grease spots and stubborn dirt can be cleaned off with an all-purpose spray cleaner.

FLOOR

To care for the decorative no wax vinyl floor covering, wash with a mild detergent. Avoid excessive application of water on new floor as it may cause lifting and curling of the vinyl.

CANOPY

The life and good looks of your canopy depend a great deal on the way you use it, and how you care for it. The canopy is made from either a cotton or synthetic fabric and is the finest canopy fabric available. We use only the best available water repellents and mildew retardants in canopy fabrics, and you can rely on our experience and craftsmanship.

Even the most durable materials require a certain amount of care, and fabric canopies are no exception. However, with only the minimum amount of attention, your canopy will remain bright and serviceable for a long period of time. The following do's and don'ts are presented to help you in the proper care of your canopy. Following these suggestions and general tips can preserve the life and beauty of a canopy.

The canopy is to be removed for winter storage due to winter condensation accumulation. ALWAYS roll up your canopy dry. Should you ever need to roll up canopy wet, unroll it within 24 hours and allow to dry. Mildew will develop on damp and wet canopies.

Some Do's:

- DO keep your canopy clean. This is the best protection against mildew. Even on mildew resistant fabric mildew can grow on accumulated dirt or foreign materials which remain on the top or bottom surface and eventually damage or stain the fabric. We cannot be responsible for such damage.
- DO wash down your canopy; brushing lightly with a cloth or soft brush.
- DO hose your canopy down occasionally every month or so with a garden hose. We recommend doing this on a hot, sunny day.
- DO keep the underside of your canopy clean by simply brushing with a clean household broom. WEBLON vinyl/dacron fabrics may also be washed on the underside in the same manner as the top. Mildew will not attack a clean canopy.
- DO keep shrubbery and vines away from the canopy, as many bushes contain acid which can be harmful to your canopy.

Some Don'ts:

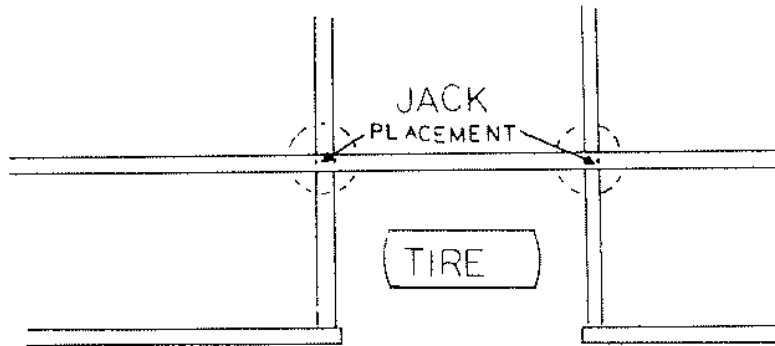
- DO NOT fold or roll in extreme cold temperatures.
- DO NOT drag your canopy across any abrasive surfaces, such as a cement drive.
- DO NOT get insect spray on the fabric, as some solutions may impair the water repellency of the fabric and cause staining.
- DO NOT allow water to stand on the canopy, causing pocketing and possible stretching.
- DO NOT wash your canopy with a harsh or strong solution, or scrub too vigorously with an abrasive cleaner.
- DO NOT force or yank your canopy when raising or lowering it. Do it gradually.
- DO NOT charcoal grill underneath the canopy.
- DO NOT store the canopy when damp or wet. Mildew is a fabric's greatest enemy and is caused by dampness. Mildew may grow on the surface of a damp canopy and permanently stain the fabric.
- DO NOT permit leaves, twigs, etc. to remain on your canopy as they might cause a staining of the fabric.
- DO NOT wrap steel or aluminum hardware with the canopy.

CHAPTER 7

MAINTENANCE/STORAGE

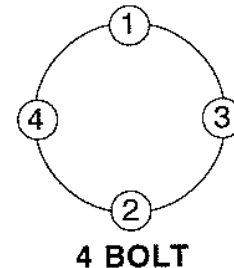
CHANGING THE TIRE & WHEEL

1. Use a sturdy and dependable jack to raise your camper, preferably a hydraulic or scissor jack. Place a jack at the point designated on main rail. A small 4" to 6" square, ½" plywood spacer can be placed between jack and frame for support.



WARNING: DO NOT place jack under any part of axle beam. The camper alignment can be altered causing excessive tire wear. DO NOT place jack under outer "Z" frame rails. DO NOT use stabilizer jacks to raise camper. They are designed to support, not raise or lower camper.

2. Loosen lug bolts. You may wish to loosen lug bolts before raising camper.
3. Remove lug bolts.
4. Change tire and wheel.
5. Reinstall lug bolts snugly.
6. Lower camper to ground.
7. Tighten lug bolts to 85-95# torque for 12" tires. Use a cross tightening sequence as shown.



4 BOLT

NOTE: Jacks and lug wrenches are not supplied with camper. Bolt head size is 13/16"

WARNING: Because the axles on an RV do not drive or steer as automobile axles do, the motion of being trailered adds stress that can loosen lug nuts, especially during the initial break-in period. Wheel lugs can work loose. Check and tighten wheel lugs every 10, 25 and 50 miles when the unit is new or a tire is changed, then every 3,000 miles.

To protect your investment, as well as ensuring your continued enjoyment and personal safety, we urge you to follow this maintenance schedule. You will find other recommended maintenance instructions and schedules in the individual component operating instructions. While many owners perform their own maintenance, your Jayco dealer will be happy to handle your service needs.

STORAGE

Depending upon your area and where your unit is stored, your camper may be a target for damage from rodents and insects. To protect your camper, never leave food inside the unit and ensure that all surfaces are clean. You may want to place rodent control products in the unit during periods of storage. Mice can do a tremendous amount of damage to the tent, drapes, cushions, etc. particularly during the winter months. Storing units in fields make them particularly inviting to rodents. Periodically inspect your unit during storage and seal off any areas which can offer an entry point to rodents or insects. Please remember to remove any screens or tape you have used to seal openings before you use the camper again. Special interest publications, such as articles and books offered through TL Enterprises (Trailer Life, Motorhome, etc.) can offer additional and practical advice on the proper storage of your camper. Damage from rodents or insects are NOT covered under your Jayco Limited Warranty.

MAINTENANCE CHART

COMPONENT	MAINTENANCE	AVOID
Wheel Bearings	<p>The wheel bearings in your new Jayco tent camper are pre-greased. It is recommended that you repack these bearings at 12,000 miles or at the end of each season's camping to prepare for winter months ahead.</p> <p>Use only a multipurpose No. 1 or 2 good quality wheel bearing grease.</p> <p>If bearing or cone (race) become pitted, replace any damaged part.</p> <p>NOTE: Should you be concerned about heat in wheel bearings, check them occasionally while traveling by placing hand on hub. You will be able to hold your hand momentarily on the hub.</p> <p>Should it be extremely hot, it is recommended to have the bearings inspected by a qualified service center.</p> <p>NOTE: During break-in period (first 500 miles) your hubs may feel extra warm due to brake shoes setting in with the brake drum.</p>	<p>(a.) Exposure to water or condensation will cause bearings to rust.</p> <p>(b.) Never let bearings run dry.</p> <p>(c.) Never overpack wheel bearings, especially in the middle of hub. It will trap heat if overpacked.</p>
Lug Bolts	<p>Lug bolts must be checked at 10, 25, and 50 miles when new or after tire removal, then every 3,000 miles. After this, lug bolts should be periodically checked for safety, especially before any long trip and extensive braking or a tire change.</p> <p>Tighten lug bolts to 85-120 ft. pounds torque using a cross tighten sequence.</p> <p>See page 47.</p>	<p>WARNING: DO NOT ignore checking wheel lug bolts. Failure to do can cause wheel loss and an accident.</p>

COMPONENT	MAINTENANCE	AVOID
Coupler	<p>Use a small quantity of WD-40 on moving mechanism and all points of movement in actuator to insure ease of operation.</p> <p>We recommend that you use conventional grease on the ball of hitch for ease of operation.</p>	
Tongue Jack	Lubricate the jack by extending to full down position and insert SAE 30 oil through oil hole in top of jack. Do this several times per season.	
Tires	It is very important to check tires often as noted in Chapter 3.	DO NOT ignore checking tire P.S.I. pressures often. Always check tire pressure during travel & before each trip.
Brakes	<p>It is important to have brakes adjusted by selling dealer at 200 miles after initial break-in period. This operation may not be included by selling dealer as part of selling price.</p> <p>After initial break-in it is recommended to adjust the brakes following each 3,000 miles or at beginning of each season's camping trips.</p>	It is very important to keep brakes adjusted as poorly adjusted brakes will not function correctly and cause accelerated wear.

COMPONENT	MAINTENANCE	AVOID
Lifter Posts	Your telescoping posts should be lubricated semi-annually with a light coat of silicone spray to insure smooth, trouble-free operation. Do not permit spray to reach tent.	DO NOT use grease or oil on posts as this lubricant will attract dirt and cause tent to become dirty.
Master Tube	Grease Zerks in both places once per year.	
Winch	The winch should be lubricated once per year, preferably at the season's beginning. Use a small quantity of light oil on two upper shaft bearings and also at each end of main drum which cable rolls on.	
Cables	Pulleys and cables need no lubricant at any time.	
L.P. Gas System	<p>At the beginning of each season:</p> <ol style="list-style-type: none"> 1. Inspect all gas lines for crimps and road damage. 2. Check all lines and connections for leakage with soapy water or leak detector. 3. We recommend that you have the regulator checked and adjusted to proper pressure once a year. A gas leak check should be performed at least once a year by a qualified technician. 	<p>DO NOT smoke while changing bottles or any lines.</p> <p>DO NOT allow any connection to be loose.</p> <p>DO NOT use ammonia based cleaners.</p>
Bed Slides	Be sure to lubricate bed slides twice per year with silicone spray as you do the lifter posts.	
Frame	<p>Inspect, clean and repaint steel members.</p> <p>Apply a commercial rust treatment.</p>	

COMPONENT	MAINTENANCE	AVOID
Bed Bow Support Poles	Inspect and replace if bent or damaged.	Using damaged bed bow support poles.
Appliances	<p>To care for brushed chrome we recommend you clean with a mild soap and water, wipe dry with soft cloth. Apply a light coat of oil such as "Johnson's Baby Oil" periodically.</p> <p>Various items on these appliances need to be cleaned periodically, such as burner orifices, etc. See individual booklets for directions or see your dealer.</p> <p>On any appliance with porcelain covering, use caution to avoid chipping. Be careful not to drop items on porcelain surfaces.</p>	DO NOT use steel wool, ammonia, acids, or abrasives on chrome surfaces.
Roof/Exterior Components	Inspect all sealant for lifting, peeling or cracking at least twice a year. Re-seal at least twice a year. This includes any putty tape used under corner trim, doors, windows, etc.	Excessive snow and ice loads.
Roof Latches	Inspect for tightness and damage. Periodically adjust to maintain tension and replace when damaged.	
Sealants	Inspect all sealant and putty tape for lifting, peeling, or cracking and reseal at least twice per year. Reseal with MS101 by removing old sealant and/or tape and using a caulk gun to apply MS101.	<p>Using poor quality sealing material.</p> <p>Failure to reseal sealant and putty tape.</p>

MAINTENANCE CHECKLIST

Prior to First Trip

- ☐ Install privacy drapes. (Privacy drape option only.)
- ☐ Condition the tent.
- ☐ Perform first time installation for the canopy. (Canopy option only.)
- ☐ Perform first time installation for the screen room. (Screen room/deluxe screen room options only.)
- ☐ Grease zerks in master tubes.
- ☐ Check LP gas lines for leaks.
- ☐ Test LP gas detector.
- ☐ Sanitize fresh water system.
- ☐ Tighten wheel nuts to specified torque values.
- ☐ Open all windows and the door and start the furnace. Leave the windows and door open and the furnace on until all fumes fully dissipate. (Furnace option only.)

First Ten Miles

- ☐ Tighten wheel nuts to specified torque values.

First Twenty-Five Miles

- ☐ Tighten wheel nuts to specified torque values.

First Fifty Miles

- ☐ Tighten wheel nuts to specified torque values.

First Two-Hundred Miles

- ☐ Tighten wheel nuts to specified torque values.
- ☐ Have brakes adjusted by a qualified service technician.

Each Trip

- ☐ Test LP gas detector.
- ☐ Inspect bed bow supports
- ☐ Check battery water level. (If equipped with battery.)
- ☐ Check tire pressure and wear.
- ☐ Check running lights.
- ☐ Inspect safety chains for signs of wear.
- ☐ Test brakes.

After Every Tire Change

- ☐ Tighten wheel nuts to specified torque values at ten miles, twenty-five miles and fifty miles.

Daily

- ☐ Recharge battery after each use. (If equipped with battery.)
- ☐ Ensure LP gas detector operation light is green in color.

Weekly

- ☐ Test LP gas detector.
- ☐ Check tire pressure and wear.

Monthly

- ☐ Clean and lubricate the coupler.
- ☐ Check fire extinguisher pressure. Do not test the extinguisher.
- ☐ Test the ground fault circuit interrupter (GFCI)

Every Three Months or 3,000 Miles

- ☐ Vacuum around L.P. Burner and pilot light areas.
- ☐ Compare refrigerator pilot flame with ideal flame. Refer to the refrigerator owner's manual for ideal flame. Clean and adjust as necessary. (Refrigerator option only.)
- ☐ Inspect refrigerator/ice box door seals.
- ☐ Inspect refrigerator combustion seals. (Refrigerator option only.)
- ☐ Check LP gas lines for leaks.
- ☐ Inspect LP cylinders for rust, pits, gouges, scrapes or sharp dents. Repaint cylinders if rust is present.
- ☐ Drain and sanitize fresh water system.
- ☐ Check, clean, tighten and lubricate battery cables. (If equipped with battery.)
- ☐ Tighten wheel nuts to specified torque values.
- ☐ Examine the tires for unusual wear, sidewall defects, cuts, wear, bulging and abrasions.
- ☐ Lubricate tongue jack.
- ☐ Lubricate hitch ball.
- ☐ Have breaks adjusted by a qualified service technician.
- ☐ Inspect roof latches for tightness and damage. Adjust to maintain tension and replace if necessary.

Every Six Months or 6,000 Miles

- ☐ Clean drains with approved drain cleaners.
- ☐ Check pipe connections for tightness. Tighten if necessary.
- ☐ Lubricate lifter posts.
- ☐ Lubricate bed slides.
- ☐ Lubricate all moving parts on the entrance steps. (Retractable steps option only.)
- ☐ Lubricate entrance door locks.
- ☐ Clean and lubricate stabilizer jacks.
- ☐ Inspect wheels for cracks, dents or distortion.
- ☐ Inspect and reseal all sealant and putty tape.
- ☐ Have suspension system serviced by a qualified service technician.

Every Year or 12,000 Miles

- ☐ Repack wheel bearings.
- ☐ Lubricate moving parts on the canopy hardware. (Canopy option only.)
- ☐ Inspect and lubricate gears, reel shaft and handle threads on winch.
- ☐ Oil drive shaft bearings.
- ☐ Grease zerks on master tube.
- ☐ Clean city water entry strainer.
- ☐ Check demand tank vent for obstructions.
- ☐ Check water pump connections and mountings for tightness.
- ☐ Vacuum the LP gas detector cover.
- ☐ Clean absorption refrigerator flue. (Refrigerator option only.)
- ☐ Have LP gas system inspected and serviced by a qualified technician.
- ☐ Have the refrigerator inspected and serviced by a qualified technician.
- ☐ Have breaks inspected and serviced by a qualified technician.
- ☐ Have furnace inspected and serviced by a qualified technician.

Every Twelve Years

- ☐ Have your propane cylinders inspected, requalified, recorded and stamped by a certified cylinder requalifier. DOT also requires requalification every five years after the initial twelve year recertification.

EXTENDED TRANSFERABLE LIMITED WARRANTY

FOLD DOWN CAMPING TRAILERS
TENT, FRAME, FLOOR, LIFTER SYSTEM, ROOF



SUMMARY OF LIMITED WARRANTY:

Jayco provides extended limited warranties on the tent, frame, floor, lifter system, and roof of folding camping trailers as outlined below. Jayco warrants that all parts of our manufacture are free from substantial defects in material and workmanship during the lifetime of the unit (warranty period) under normal use and service, when used for its intended purpose of recreational travel and camping. The warranty period shall begin on the date the vehicle is sold to the first retail consumer purchaser or subsequent transferee or, if the dealer prior to sale first places the vehicle in service, on the date the vehicle is first placed in such service.

This warranty may be transferred one time to the second owner within a two (2) year period from the date the vehicle is sold to the first retail consumer purchaser or, if the dealer prior to sale first places the vehicle in service, on the date the vehicle is first placed in such service with proper application and a \$100 processing fee.

Lifter System

- (1) Jayco extends to the original consumer purchaser and subsequent transferee, a limited warranty on the lifter system against functional defects in material or workmanship for the lifetime of the fold down camping trailer.

(1A) Exclusions:

Normal adjustments to the lift system (such as periodic roof height adjustment to compensate for stretch in cables) are covered by this warranty for the first year only.

The installation of a roof air conditioner or any other cargo CANNOT exceed 350 pounds. Exceeding this limit voids the warranty provision on the lift system. Do not lift roof with any load in place and always unlock all roof latches before raising.

Any damages resulting from alterations to the lift system.

Any damages caused by improper maintenance, improper repair, improper use or by use of improper repair parts.

Steel Frame

- (2) Jayco extends to the original consumer purchaser and subsequent transferee, a limited warranty on the steel frame against functional defects in material or workmanship for the lifetime of the fold down camping trailer.

(2A) Exclusions:

This lifetime provision does not include the frame surface, axle beam, springs or running gear components.

Floor/Bed Platforms

- (3) Jayco extends to the original consumer purchaser or subsequent transferee, a limited warranty on the floor against functional defects in material or workmanship in the structural integrity of the floor for the lifetime of the fold down camping trailer. Jayco extends to the original retail purchaser, a limited warranty on the bed wood against functional defects in material or workmanship for the lifetime of the fold down camping trailer and applies only to the structural integrity of the bed wood.

(3A) Exclusions:

Functional defects in the vinyl floor covering are covered for the first year of ownership only. The vinyl floor covering is NOT warranted against gouges, cuts or tears. Repair or replacement of the vinyl floor covering will be the sole remedy for defects.

Roof

- (4) Jayco extends to the original consumer purchaser or subsequent transferee, a limited warranty on the roof against functional defects in material or workmanship for the lifetime of the fold down camping trailer or Sportster truck camper.

(4A) Exclusions:

This warranty provision for the roof does not include maintenance, surface finish, re-sealing, or damage due to the installation of non-standard equipment. NOTE: Snow loads must be removed from the roof to avoid damage to the roof. All roof seams and moldings must be resealed (cap sealed) at least once each year.

Tent Material

- (5) Jayco extends to the original consumer purchaser or subsequent transferee, a limited warranty on the tent material for three (3) years from the date of retail purchase against functional defects in material or workmanship on the fold down camping trailers. During year one, parts, labor and freight are covered. During year two and three, parts, Jayco factory labor and return freight from Jayco are covered. Dealer labor to remove and reinstall the tent plus shipping costs to Jayco is not covered. (In simple terms, you send it to us, we will fix it and send it back during year two and three).

(5A) Exclusions:

The tent is not warranted against fading, discoloration, soiling, leaking due to contaminants, mildew from condensation or storing tent when wet, or problems resulting from misuse or abuse. Rips and tears are not covered under any warranty.

COMPANY'S OBLIGATIONS:

If the manual lifter system, steel frame, floor or roof is determined to have a functional defect in material or workmanship during the warranty term, Jayco will remedy the defect without charge for parts or labor, within a reasonable time after receipt of notice, either by repair or replacement at Jayco's sole option. Coverage for the tent is for the pro-rated duration as noted in Policy 5 of this warranty. Warranty service may be obtained from Jayco or its authorized dealers, or repair centers designated and authorized by Jayco or its dealers. In the event the purchaser discovers a functional defect in the manual lifter system, steel frame, floor or roof, and has one of those components repaired by an unauthorized service person and said repairs are covered by this Warranty, Jayco shall be liable only for costs of those repairs up to the amount that Jayco would have incurred if Jayco or an authorized dealer had made the repairs. Warranty performance will commence within a reasonable time after Jayco's receipt of notice of the defect and will be completed within a reasonable time, subject to availability of parts and scheduling.

ITEMS EXCLUDED FROM WARRANTY:

This warranty does not cover defects caused by:

- (A) Negligence in operation and maintenance.
- (B) Misuse
- (C) Damage not resulting from defect or malfunction (act of God)
- (D) Any damage caused by alterations or additions to original equipment.
- (E) Claims relating to unauthorized repair, damage or defects.
- (F) Commercial or residential use.

PURCHASER'S OBLIGATIONS:

Purchaser shall give notice on this warranty within ten days after discovery of the defect to either an authorized Jayco dealer or Jayco. Notice should contain the name and mailing address, proof of date of purchase, model, year and serial number of the unit, name and address of the selling dealer and a description of the defect. All costs incurred by Purchaser in transporting the Jayco fold down camping trailer for warranty service shall be borne by Purchaser. No action to enforce this Warranty shall be commenced later than three (3) months after the expiration of the warranty period.

DISCLAIMER OF CONSEQUENTIAL AND INCIDENTAL DAMAGES:

You and any other user of Jayco products shall not be entitled to any consequential or incidental damages, including without limitation, loss of use of the unit, inconvenience, lodging, damage to personal property, phone calls, meals, lost income or earnings. This warranty gives you specific legal rights and you may also have other rights, which vary from state to state.

DISCLAIMER AND LIMITATION OF IMPLIED WARRANTIES:

Jayco does not authorize any person to create for it any other obligation or liability in connection with this vehicle. Any implied warranty of merchantability or fitness for a particular purpose applicable to this vehicle is limited in duration to the duration of this written warranty. The performance of repairs is the exclusive remedy under this written warranty or any implied warranty. Jayco shall not be liable for incidental or consequential damages resulting from breach of this written warranty or any implied warranty. Some states do not allow limitations on how long an implied warranty will last or the exclusion or limitation of incidental or consequential damages, so the above limitations or exclusions may not apply to you.

PARTS AND DESIGN CHANGES:

Jayco may make parts and design changes from time to time without notice and repairs or replacements may be made with new or different parts. Jayco reserves the right to make changes in the design or material of its products without incurring any obligation to incorporate such changes in any product previously manufactured.

All inquiries regarding this Warranty should be sent to:

JAYCO, INC.

903 South Main * P.O. Box 460 * Middlebury, IN 46540

Telephone: 219-825-0608

Litho U.S.A

Revised 5/98

TOWABLE TRANSFERABLE LIMITED WARRANTY

Fold Down, Travel Trailer, Fifth Wheel
Two year limited warranty
Three year structural



SUMMARY OF WARRANTY:

Jayco warrants every Jayco towable recreational vehicle to the first retail consumer and transferee, for a period of two (2) years and three (3) years on the structure from the date of purchase under normal use and service, when used for its intended purpose of recreational travel and camping that all parts of our manufacture are free from substantial defects in material and workmanship. The warranty period shall begin on the date the vehicle is sold to the first retail consumer purchaser or, if the dealer prior to sale first places the vehicle in service, on the date the vehicle is first placed in such service.

This warranty may be transferred to the second owner during the warranty period with proper application and a \$100 processing fee.

STRUCTURAL WARRANTY:

Jayco warrants the structure of the interior and exterior sidewalls, floor, roof, and frame to be free of material and manufacturing defects.

EXCLUSIONS:

- (1) Items added or changed after the vehicle left the possession of Jayco.
- (2) Any vehicle used for commercial purposes, or full time residential use.
- (3) Normal wear and usage, such as fading or discoloration of soft goods (tents, upholstery, drapes, carpet, vinyl, screens, cushions, mattresses), fading or discoloration of exterior plastic or fiberglass components, tears, punctures, soiling, mildew, effects of moisture condensation inside the vehicle, or mishandling, neglect, abuse, misuse, lightning or other acts of nature, or corrosive atmospheres which can result in rusting, oxidation or pitting.
- (4) Minor imperfections, which do not affect the suitability of the vehicle for its intended use.
- (5) Normal and routine maintenance such as inspections, lubricating, adjustments, tightening of screws, tightening of lug nuts and wheels, sealing, rotating, cleaning, or damages arising from the failure to have maintenance performed as outlined in the owners manual.
- (6) Alignment or adjustments to axles or spindles when caused by improper maintenance, loading or damage from road hazards, including off road travel, wheel damage or balancing, or damage resulting from tire failures.
- (7) Costs incurred for transportation of the vehicle to a dealer, or costs incurred as the result of the consumer's request to have repairs performed at a location other than an authorized dealership.
- (8) This Limited Warranty does not apply to or cover any component, which is warranted separately by its manufacturer. Examples are:

*Chassis...Tires...Axles...Wheels... Running Gear Components...
Batteries...Appliances...Power Converters...Jacks...*

The written warranty that is provided by the component manufacturer is a direct responsibility of that manufacturer. Jayco makes no warranty as to those components. Please refer to the written warranties issued by such component manufacturers for the terms and provisions of their written warranty undertakings. Warranty information with respect to these items is available from your dealer.

HOW TO OBTAIN WARRANTY SERVICE:

In the event that a defect in materials or workmanship is found to exist in body parts constructed by Jayco, Jayco will bear the cost of the repair or replacement of such defective materials or workmanship; Provided that the owner:

(A) Notifies an authorized Jayco dealer or Jayco of the defect within 10 days; (If authorized service is not available in your area or other assistance is needed to obtain the benefit of this warranty, please call direct to Jayco 219-825-0670 and ask to speak with someone in the warranty department.)

(B) Returns the vehicle to a dealer or factory service center promptly, as scheduled; and

(C) Pays any freight or transportation costs, or import duties or fees involved.

No action as to enforce this warranty shall be commenced later than three (3) months after expiration of the warranty period.

NOTE: Jayco, in obtaining repairs, does not control the scheduling of service work at dealerships. You may encounter some delay in scheduling or completion of work.

PURCHASER'S OBLIGATIONS:

Purchaser shall deliver this vehicle for warranty service within a reasonable time after discovery of the defect and in no event later than thirty (30) days after expiration of the warranty period. All incidental and consequential expenses incurred by Purchaser in obtaining warranty service shall be borne by Purchaser. No action to enforce this warranty shall be commenced later than three (3) months after expiration of the warranty period.

DISCLAIMER OF CONSEQUENTIAL AND INCIDENTAL DAMAGES:

You and any other user of Jayco products shall not be entitled to any consequential or incidental damages, including without limitation, loss of use of the unit, inconvenience, lodging, damage to personal property, phone calls, meals, lost income or earnings. This warranty gives you specific legal rights and you may also have other rights, which vary from state to state.

DISCLAIMER AND LIMITATIONS OF IMPLIED WARRANTIES:

Jayco does not authorize any person to create for it any other obligation or liability in connection with this vehicle. Any implied warranty of merchantability or fitness for a particular purpose applicable to this vehicle is limited in duration to the duration of this written warranty. The performance of repairs is the exclusive remedy under this written warranty or any implied warranty. Jayco shall not be liable for incidental or consequential damages resulting from breach of this written warranty or any implied warranty. Some states do not allow limitations on how long an implied warranty will last or the exclusion or limitation of incidental or consequential damages, so the above limitations or exclusions may not apply to you.

PARTS AND DESIGN CHANGES:

Jayco may make parts and design changes from time to time without notice and repairs or replacements may be made with new or different parts. Jayco reserves the right to make changes in the design or material of its products without incurring any obligation to incorporate such changes in any product previously manufactured.

WARRANTY REGISTRATION:

Your warranty registration records should be completed and delivered to the manufacturers of component parts. Your Jayco Dealer will assist you in filling out the warranty registration form, which must be returned to Jayco within 10 days of you taking delivery of your Jayco product. Failure to send this warranty registration to Jayco can cause you delays in obtaining the benefits of your Jayco Limited Warranty.

All inquiries regarding this Warranty should be sent to:

JAYCO, INC.

903 South Main * P.O. Box 460 * Middlebury, IN 46540

Telephone: 219-825-0608



LIMITED WARRANTY TRANSFER APPLICATION

Mail the Jayco, Inc. Limited Warranty Transfer Application, along with transfer fee of \$100.00 payable to:

Jayco, Inc.
Warranty Dept.
P.O. Box 460
Middlebury, IN 46540

**PLEASE READ TERMS AND REPRESENTATIONS
PRIOR TO SIGNING.**

A DEALER INFORMATION

Name _____
Dealer Address 1 _____
Dealer Address 2 _____
Dealer Address 3 _____
City _____ State _____
Zip _____ Phone Number _____

B PRIOR OWNER INFORMATION

Transfer Coverage From:

First Name _____ Last Name _____
Vehicle Identification Number _____

C NEW OWNER INFORMATION

Transfer Coverage To:

First Name _____ Last Name _____
Owner Address 1 _____
Owner Address 2 _____
Owner Address 3 _____
City _____ State _____
Zip _____ Phone Number _____

____ Date of Transfer _____ Odometer Reading at Transfer **MUST BE COMPLETED ON ALL MOTORIZED VEHICLES**

SUBJECT TO TERMS AND CONDITIONS LOCATED ON THE BACK OF THIS FORM

D SIGNATURES

New Owner's Signature _____ Selling Dealer's Signature _____

THE JAYCO, INC. LIMITED WARRANTIES MAY BE TRANSFERRED ONE (1) TIME DURING THE WARRANTY PERIOD WITH THIS APPLICATION AND A \$100 PROCESSING FEE. THE FOLDING CAMPER'S EXTENDED TRANSFERABLE LIMITED WARRANTY MAY BE TRANSFERRED ONE TIME WITHIN THE FIRST TWO (2) YEARS OF OWNERSHIP.

Terms and Representations

By signing your signature(s) on the face side of this form, and in order to induce Jayco, Inc. to transfer its Limited Warranty, you represent the following:

1. That you have received and read a copy of the Jayco Limited Warranty and Owner's Manual.
2. You understand that the unit is to be used only for recreational camping and travel.
3. That all information provided by you on the face side of this form is true and correct.
4. You understand that you are purchasing a pre-owned recreational vehicle and Jayco, Inc. does not make any representation as to its present condition.

WELCOME TO THE JAYCO FAMILY!

As the owner of a new Jayco recreational vehicle we are proud to welcome you to our growing family.

All Jayco RV homes are built with care, under the watchful eye of our Quality Assurance program. And it is our sincere wish that you will have a lifetime of fun times with your new Jayco.

We are pleased you chose Jayco and want to do everything possible to make sure you stay as happy with your Jayco RV home as you were on the day you bought it.

Jayco dealers are our special partners in customer service; we work closely with them in an effort to keep you satisfied. We honestly feel that Jayco dealers are on the whole the best in the business. And with nearly 300 of them in the U.S. and Canada you should never be too far from help if you ever need it.



In the months and years to come we hope you'll become a close member of the Jayco family. One way to enjoy your Jayco even more is through our owners club – the Jafari International Travel Club. It's lots of fun and a great way to meet other members of the Jayco family. If you're interested please talk to your dealer about the "flight" in your area. Or write to us directly and we'll be in touch.

From Jayco's family to yours: "Welcome Home!"



903 South Main Street • P.O. Box 460 • Middlebury, IN 46540