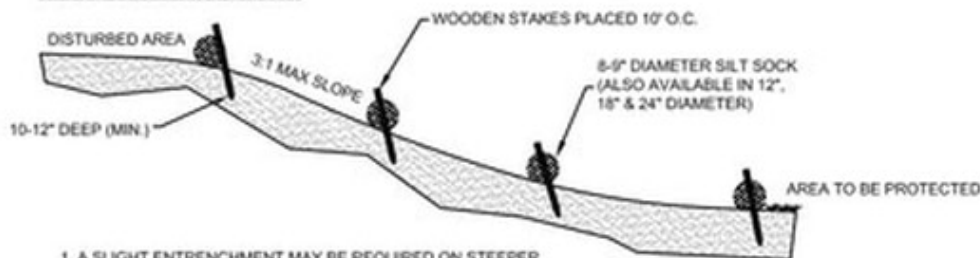


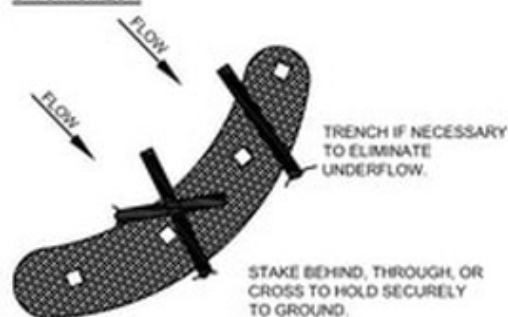
SILT SOCK INSTALLATION GUIDELINES

SLOPE INTERRUPTION



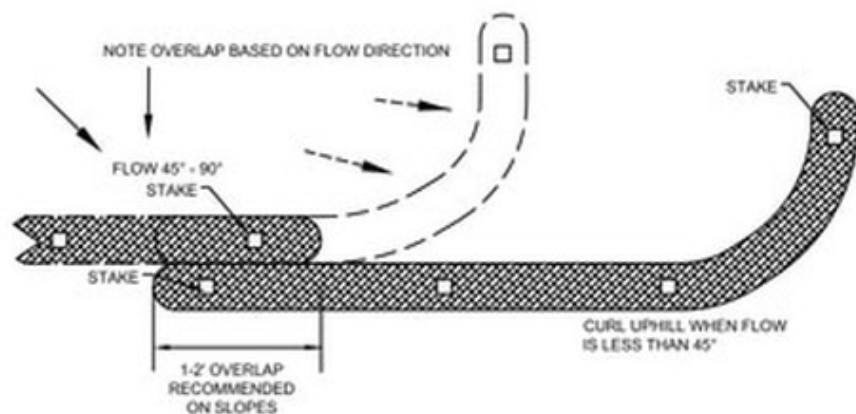
1. A SLIGHT ENTRENCHMENT MAY BE REQUIRED ON STEEPER SLOPES TO ENSURE INTIMATE GROUND CONTACT.
2. REMOVE SEDIMENT FROM THE UPSLOPE SIDE OF THE SILT SOCK WHEN ACCUMULATION HAS REACHED 1/2 OF EFFECTIVE HEIGHT OF SOCK.
3. LOOSE FILTER MEDIA MAY BE BACKFILLED ON THE UPSLOPE SIDE OF SOCK TO ENHANCE PERFORMANCE.
4. HARDWOOD STAKES 2"x2"x24" (NOMINAL) ARE SUGGESTED.

DITCH CHECK

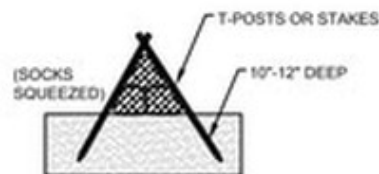


INSTALL SILT SOCK PERPENDICULAR TO FLOW WITH ENDS CURLLED SLIGHTLY UPSTREAM TO PREVENT HIGH WATER FROM GOING AROUND THE ENDS. SLOW AND SPREAD WATER TO REDUCE CHANNELING AND EROSION

PERIMETER CONTROL & OVERLAPPING

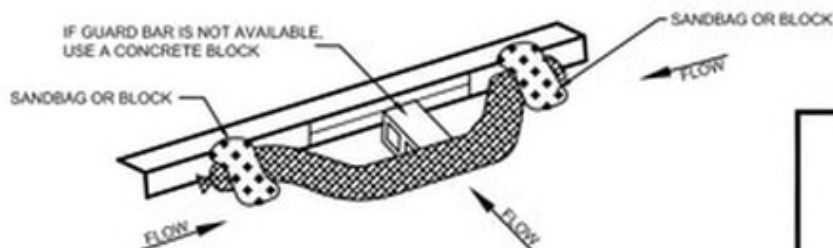
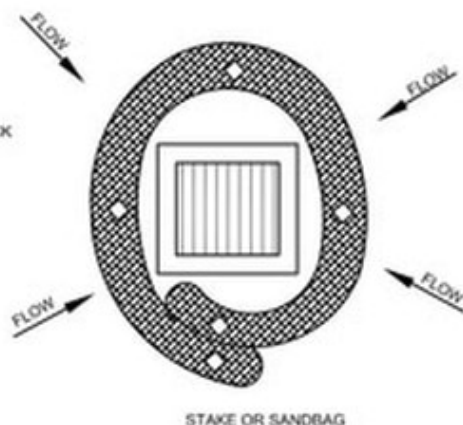
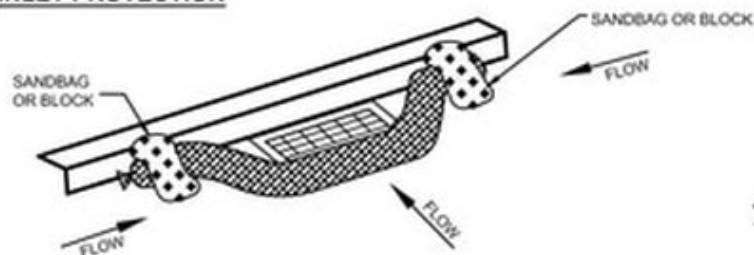


PYRAMID INSTALLATION STAKING



A PYRAMID OF SMALLER DIAMETER SILT SOCKS WILL INCREASE THE EFFECTIVE HEIGHT OF THE DEVICE WHEN LARGER DIAMETER SOCKS ARE NOT READILY AVAILABLE OR EASY TO INSTALL.

INLET PROTECTION



1. THESE GUIDELINES ARE BASED UPON MANUFACTURERS RECOMMENDATIONS. PROJECT SPECIFICATIONS MAY SUPERSEDE THESE GUIDELINES.
2. REFER TO REGULATORY AUTHORITY OR PROJECT ENGINEER FOR DETAILED INSTALLATION PROCEDURES.
3. WOOD FILLER MATERIAL IS PROPERLY SIZED, BIODEGRADABLE, WEED, SEED & DISEASE FREE AND ENVIRONMENTALLY SOUND.

Silt Sock

EROSION CONTROL PRODUCTS

(608) 438-7625
WWW.SILT SOCK.NET